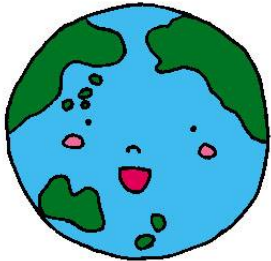




THE NEW GLOBE!



Hello! Finally, Spring is here and the fleeting cherry blossom season has ended. Spring is often considered the season of new encounters and sad farewells. As many of you may already know, the

calendar year in Japan may begin in January, but the fiscal year begins in April, so the arrival of Spring tends to coincide with this busy time of year as people move around in the workplace, get transferred to different cities and schools, graduate from school, start their first job after university, etc.

We hope that things have settled down for you since we're now heading into May, and hope that you also haven't fallen into the 'May Blues' (Go-gatsu-byo) slump either. They call it the 'May Blues' because many people find themselves tired and worn out after a busy beginning to the new fiscal year.

In the spirit of change, if you haven't noticed by now, The Globe has been given a makeover! We've increased the volume from six to eight pages, and also changed the layout a little bit.

We hope the changes to The Globe will keep all of its readers better informed about life in Fukuyama. The order of things may have changed a little, but don't worry—we haven't deleted anything! Instead, we've added two pages worth of information that hopefully you will find useful. New items include a list of hospitals that are open on holidays and weekends and a list of the different free consultation services offered here in City Hall.

As mentioned before, Spring is a time of change, so if you have moved recently, please call our office at 084-928-1002 and report a change of address to us as soon as possible! Otherwise we won't be able to keep on sending you The Globe since the post office will only forward your mail to a new address for one year.

We hope you find the changes to The Globe useful. Thank you very much for your continued support of The Globe and please continue to read and support us in the future!

Did you know? The City also publishes newsletters in Chinese, Portuguese, and easy-to-understand Japanese/English, so that all foreign residents can have access to important information!



INSIDE THIS ISSUE

THE NEW GLOBE!	pg 1	Deep in the Kitchen	pg 4
FAGE Events and Services	pg 2	Medical Info	pg 5
Japanese Classes	pg 2	Notices from the City	pg 5
Events	pg 3	Hospital Holiday Hours	pg 6
Japanese Proverb Corner	pg 3	Free Consultation Services	pg 7
Services	pg 4	Movie Information	pg 8

FAGE SERVICES AND EVENTS



FREE JAPANESE TUTORING FOR FOREIGNERS

One-on-one Japanese language tutoring for beginners is available through the FAGE office. Please apply in person at the Citizens' Consultation Division, 1F Fukuyama City Hall.

For info please call FAGE at (084) 928-1002



5月 MAY: CROSS-CULTURE LECTURE

WELCOME TO INDIA!

You hear about India on the news, books, and magazines, but ever wonder what it's really like—from its history to everyday life? Come and learn about India with FAGE!

When: Sunday, May 13

14:00 ~ 15:30



Where: Fukuyama City Hall, 3rd Floor

Medium Meeting room (中会議室)

Lecturer: Mr. Anand Nambiar



Limit: None! NO RESERVATIONS NEEDED!

Parking is available in the Higashi-sakura machi Parking Lot. However, we will only be able to validate for **one hour**. Your cooperation is appreciated!



6月 JUNE: JAPANESE POTTERY EVENT

JAPANESE POTTERY EXPERIENCE!

Have an artistic soul? Ever wanted to try and make a tea cup or small bowl by yourself instead of buying them at the store? Well then, this is the event for you!

When: Sunday, June 17

14:00 ~ 16:00



Where: Fukuyama City Hall, 3rd Floor

Medium Meeting Room (中会議室)

Teacher: Mr. Tetsuya Makitani

Limit: 25 people (RESERVATIONS NEEDED!!!!)



First come, first serve—reserve your spot early!!!

Fee: Foreigners 500 yen

FAGE Members 1,500 yen

CALL 084-928-1002
STARTING MAY 14 TO
RESERVE YOUR SPOT!!!!

JAPANESE LANGUAGE CLASSES



MATSUNAGA JAPANESE CLASS

When: Every Saturday
19:00-20:30

Where: Miyanishi Community Building

Fee: Free
*Please apply in person on the day of the lesson

For info, please call 084-936-2312
(JAPANESE ONLY!!!!)

NGO FUKUYAMA JAPANESE CLASS

When: Every Saturday
19:00-20:30

Where: Fukuyama Shimin Sankaku Center

Fee: 1000 yen/month

For info/or registration, please call 090-8993-4305 (JAPANESE ONLY!!!!)

EKIYA JAPANESE CLASS

When: Every Tuesday, 14:00 ~ 16:00
Every Saturday, 19:30-20:30

Where: Ekiya Kuramitsu Community Bldg. (Tues.) & Ekiya Community Center (Sat.)

Fee: Free

For info/or registration, please call 084-976-0470 (JAPANESE ONLY!!!!)

EVENTS

**ROSE FESTIVAL 2012**

It's that time of year again folks! Time for Fukuyama's Rose Festival. This year the Rose Festival will be on **May 19 and 20 (Sat. and Sun.)** with the parade on Sunday as always. There will be performances on the Rose Stage (next to the Rose Arena), food stalls, booths selling Fukuyama's own 'rose goods', displays, etc.—fun for the entire family!

For more information, please check out the Rose Festival website at: <http://bara-matsuri.jp/> or call 084-944-5155 (JAPANESE ONLY)

**TAI AMI (SEA BREAM NET FISHING)**

It's that time of year again—the season for tai (sea bream)! The season this year starts at the end of April and will run until the end of May. Fukuyama has a rich history of sea fishing, being along the Seto Inland Sea, and every year such a history is preserved through the traditional netting of tai in Tomo-no-Ura. For a separate fee (around 3,000 yen per person, 1,500 yen for children) you can go out on a boat and witness the traditional net fishing yourself!

Reservations for the boat are necessary and more information and details on schedules, prices, etc. can be found on this website: <http://www.fukuyama-kanko.com/event/taiami/taiami.html> (JAPANESE ONLY)

**TOMO-NO-URA
BENTENJIMA FIREWORKS**

On **May 26 (Saturday) from 7-8:30 pm**, the welcoming of the summer season will open with a bang! The annual Bentenjima Fireworks Show will take place and open up the season for fireworks around Hiroshima.

The actual firing of the fireworks may not start until closer to 8 pm, but make sure to arrive early and secure a good viewing spot!

If it rains, the fireworks show will be moved to Sunday instead, so please be careful! If you need more information please call: 084-928-1042 (JAPANESE ONLY)

**21st Annual Onomichi Takigi Noh**

The annual Takigi Noh performance will be held on **May 12 (Saturday)** at the Jodo Temple in Onomichi. The doors open at 5 pm and the show starts around 6 pm. It should all end around 8 pm.

For more information on ticket sales and other related information, please check out the following website: <http://www.ermjp.com/noh/index02.htm> or call the Onomichi Tourism Association at 084-837-9736 (JAPANESE ONLY).



JAPANESE PROVERB CORNER

**JAPANESE PROVERB OF THE MONTH**

のう たか つめ かく
「能ある鷹は爪を隠す。」

Nou aru taka ha tsume wo kakusu.



Have you ever heard of this proverb before? Literally it means 'a hawk with skill hides its claws.' For our intents and purposes, it means those people with special talents don't go around trying to show off or brag to others about it. For example, if you find out one day that one of your coworkers, with whom you've been working with for a couple years, can speak five languages, you might call that 'nou aru taka ha tsume wo kakusu'!

SERVICES

**HELLO WORK FUKUYAMA**

Hello Work provides advice and services to arrange employment for foreign nationals. Language services in English, Spanish, and Portuguese are available on **Wednesdays & Fridays between 10:00 ~ 12:00, 13:00 ~ 17:00**. Please bring your own interpreter for all other times.

Address: Higashi-sakura machi 3-12 (the building just east of City Hall)

Tel: 084-924-0074

FREE VISA CONSULTATION FOR FOREIGNERS

Areas of consultation include: employment of workers with special skills from overseas, getting a student visa, changing the status of visas, marriages and divorces, and obtaining Japanese citizenship. FREE and confidential.

PLACE: Hiroshima International Center, Crystal Building 6th floor, Hiroshima City, Naka-ku, Nakamachi

Tel: 0120-783-806 (toll free) from landlines or 082-541-3888 from cell phones.

English consultants available **SATURDAY ONLY from 9:30 to 12:30**

DEEP IN THE KITCHEN

**Oyako-don (Chicken and Egg on Rice)****Ingredients: (4 servings)**

- 6-8 cups of cooked rice
- 4-5 eggs
- 115 g of chicken
- 2 long onions (naganegi) or 4 green onions

Sauce:

- 2 1/2 cups of dashi or chicken stock
- 6 tbsp 'dark' soy sauce
- 6 tbsp 'light' soy sauce
- 3 tbsp sugar

Directions:

Start cooking plain white rice. In a bowl, mix (do not beat) eggs lightly with chopsticks and set aside. Cut boned chicken (with or without skin) into 7.5 mm pieces, and cut the onion into 2.5 cm lengths. Raw chicken is better, but you can use leftover cooked chicken if you want—however, the flavor soaks in better with uncooked chicken to start with.

Combine ingredients for the sauce in a frying pan. Bring to a gentle boil over medium heat. Add chicken and simmer uncovered for 5 minutes. Add onion and simmer a minute longer. Adjust seasoning to taste if necessary. Stir the eggs and pour gently in a steady stream around the chicken. Let the egg spread naturally—**DO NOT STIR**. Keep on medium heat until egg starts to bubble at the edges. At this point, stir once. Do not let the egg cook hard—the hot rice you pour everything over will do the final cooking.

Put portions of hot rice in individual bowls. With a large spoon, scoop a portion of the egg/chicken mix and put on rice. Eat quickly before it gets cold! =)

<http://www.bento.com/trt-oyako.html>

MEDICAL INFO



HEALTH CONSULTATIONS FOR MAY

Adult Health Consultations

Free health consultations available at the following locations:

Morning: 9:30 ~ 11:30 am Afternoon: 1:30 ~ 3:30 pm

Fukuyama Area

5/9 Kumano Fureai Plaza

Morning

5/15 Joutou Fureai Plaza

Morning

Northern/Shinichi Area

5/17 Kouryukan Tode

Afternoon

5/22 Kouryukan Tsunekanemaru

Afternoon

Infant Child Care Consultations Free consultation services for parents who have any concerns about their baby or infant's health and well being.

Morning: 9:30 ~ 11:00 am

Fukuyama Area

5/7 Jinken Koryu Center (1-11mths)

Morning

5/8 Hoken Center (4-5mths)

Morning

5/15 Hoken Center (8-9mths)

Morning

5/22 Hoken Center (1yr10mths-2yrs)

Morning

5/29 Hoken Center (1yr-1yr3mths)

Morning

Eastern Area

5/9 Toubu Shimin Center (1-3mths)

Morning

5/16 Toubu Shimin Center (6-7mths)

Morning

5/23 Toubu Shimin Center (10-11mths)

Morning

5/30 Toubu Shimin Center (1yr4mth-1yr9mth) Morning

Northern/Shinichi Area

5/9 Hokubu Shimin Center (1-6mths)

Morning

5/22 Kamo Shisho (1-2yrs)

Morning

5/23 Ashida Kouryukan (1-2yrs)

Morning

5/25 Hokubu Shimin Center (1-2yrs)

Morning

Matsunaga Area

5/15 Seibu Shimin Center (1-3mths)

Morning

5/16 Seibu Shimin Center (7-8mths)

Morning

5/17 Seibu Shimin Center (1yr-1yr6mths)

Morning

Kannabe Area

5/8 Kannabe Chuo Comm. Cen. (4-6mths)

Morning

5/15 Kannabe Chuo Comm. Cen. (9-11mths)

Morning

5/22 Kannabe Chuo Comm. Cen. (1yr7mth-2yrs) Morning

Numakuma/Utsumi Area

5/22 Numakuma Shisho (1-11mths)

Morning



Eat a healthy diet and don't forget to exercise! Keep healthy and ward off those 'May Blues'!



NOTICES FROM THE CITY



GARBAGE COLLECTION FOR MAY

May 3rd and 4th are national holidays so there will be no garbage collection on these days. Please be careful and consult your garbage collection schedule as necessary.

PAPER RECYCLING FOR MAY

The following Hallows locations will be collecting newspapers, cardboard boxes, books, magazines, and milk cartons for recycling during the hours of 10:00 am~4:00 pm.

May 2

Minami Matsunaga Hallows

May 16 Higashi Fukuyama Hallows

May 9

Shingai Hallows

May 23 Ekiya Mall Hallows



HOSPITAL HOLIDAY HOURS



Hospitals are open from 9:00 am ~ 5 pm. PLEASE CALL AHEAD BEFORE YOU GO!!!!

FREE CONSULTATION SERVICES



Free Legal Consultations ①

Free legal consultations are conducted at City Hall on most **Wednesdays** throughout the year. **Those who are currently in court and/or arbitration are ineligible to use this service.**

If you cannot speak Japanese, **you must bring your own interpreter with you.** There will be no English speaking interpreters provided.

Reservations can be made starting 2 weeks prior to each date. There is a limit of 18 people per day and **reservations are necessary**, so please plan and make your reservation early!

For reservations and other inquiries, please call 084-928-1188 (JAPANESE ONLY), or inquire directly at the Consumer Consultations Center (Shouhi Seikatsu Center) on the 1st Floor of City Hall.

Schedule:

- May 9 9:00~12:00
- May 23 9:00~12:00
- May 30 9:00~12:00

Place:

Citizens' Consultation Rooms (1st Floor City Hall)
*if unsure of the location when you arrive, please inquire at the Consumer Consultations Center (inside the Citizens' Consultation Division <Shimin Soudan-ka>)

Free Legal Consultations ②

If coming to City Hall is too far for you, the Northern and Eastern Branch Offices have legal consultations as well. **The same rules apply: you need reservations and you need to bring your own interpreter if you cannot speak Japanese.**

Schedule:

- May 23 9:20 ~ 12:00

Reservations can be made starting May 10. There is a limit of 8 people.

For reservations and inquiries, please call either the Northern Regional Development Division (084-976-8800) or the Eastern Regional Development Office (084-940-2571). (JAPANESE ONLY)

Free Real Estate/Property Consultations

Free real estate/property consultations are offered for those seeking information on buying property, selling property, renting property, etc. **You must bring your own interpreter with you if you need one. Reservations are needed.**

Schedule:

- May 11 13:00 ~ 16:00

For reservations and other inquiries, please call 084-931-3977 (JAPANESE ONLY).

Free Human Rights Consultations

There are free human rights consultations offered at City Hall once a month. Those individuals who have concerns about bullying, harassment, and other issues concerning human rights, can consult a specialist here. **You must bring your own interpreter if necessary. Consultations are on a first come/first serve basis on the day of.**

Schedule:

- May 15 13:00 ~ 16:00

Place:

Citizens' Consultation Rooms (1st Floor City Hall)

For further inquiries, please contact the Human Rights Promotion Division at 084-928-1006 (JAPANESE ONLY).

Free Health Insurance/Labor-related Consultations

Those individuals with concerns about their health insurance, pensions, labor conditions, etc. may consult with a specialist here. **You must bring your own interpreter if necessary. Consultations are on a first come/first serve basis on the day of.**

Schedule:

- May 17 13:00 ~ 16:00

Place:

Citizens' Consultation Rooms (1st Floor, City Hall)

For more information please contact 084-928-1050 (JAPANESE ONLY).

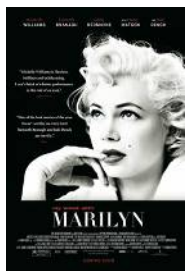
MOVIES

**BEGINNERS (DRAMA)**

Oliver meets the irreverent and unpredictable Anna only months after his father Hal has passed away. This new love floods Oliver with memories of his father who -- following 44 years of marriage -- came out of the closet at age 75 to live a full, energized, and wonderfully tumultuous gay life. The upheavals of Hal's new honesty, by turns funny and moving, brought father and son closer than they'd ever been able to be. Now Oliver endeavors to love Anna with all the bravery, humor, and hope that his father taught him. (*RATED R)

PLAYS AT CINEMODE STARTING MAY 5

<http://movies.yahoo.com/movie/beginners/production-details.html>

**MY WEEK WITH MARILYN (ADAPTATION/DRAMA)**

Colin Clark met Marilyn Monroe while working as a young assistant on Laurence Olivier's "The Prince and the Showgirl." When Marilyn experienced emotional difficulties during shooting, the 23-year-old third assistant director came to her aid and romance developed. But one week of honesty and fun was not enough to save the doomed star from self-destruction. (*RATED R)

PLAYS AT CINEMODE STARTING MAY 5

<http://movies.yahoo.com/movie/my-week-with-marilyn/production-details.html>

**LARRY CROWNE (DRAMA/ROMANCE/COMEDY)**

Until he was downsized, affable, amiable Larry Crowne was a superstar team leader at the big-box company where he's worked since his time in the Navy. Underwater on his mortgage and unclear on what to do with his suddenly free days, Larry heads to his local college to start over. There he becomes part of a colorful community of outcasts, also-rans and the overlooked all trying to find a better future for themselves... often moving around town in a herd of scooters.

PLAYS AT CINEFUKU, EIGARU 8 CINEMAS, AND KORONA WORLD STARTING MAY 11

<http://movies.yahoo.com/movie/larry-crowne/production-details.html>

**THE DESCENDANTS (DRAMA/ COMEDY/ADAPTATION)**

Matt King is an indifferent husband and father of two girls, who is forced to re-examine his past and embrace his future when his wife suffers a boating accident off of Waikiki. The event leads to a rapprochement with his young daughters while Matt wrestles with a decision to sell the family's land handed down from Hawaiian royalty and missionaries. (*RATED R)

PLAYS AT EIGARU 8 CINEMAS AND KORONA WORLD STARTING MAY 18

<http://movies.yahoo.com/movie/the-descendants/production-details.html>

CONTACT

**E-MAIL:**

kokusai@city.fukuyama.hiroshima.jp

Tel: (084) 928-1002

Fax: (084) 927-3897



The Globe is published monthly by the Fukuyama Association for Global Exchange (FAGE), c/o Citizens' Consultation Division, Fukuyama City Hall, 3-5 Higashisakura-machi, Fukuyama-shi, Hiroshima-ken, Japan 720-8501

All contributions are welcome. Please address your correspondence regarding subscriptions, article contributions, and comments/suggestions in English or Japanese to the FAGE office.

The Globe はふくやま国際交流協会より月1回発行されています。日本語寄稿も大歓迎します。
連絡先は、〒720-8501 広島県福山市東桜町3-5、福山市市民相談課

