

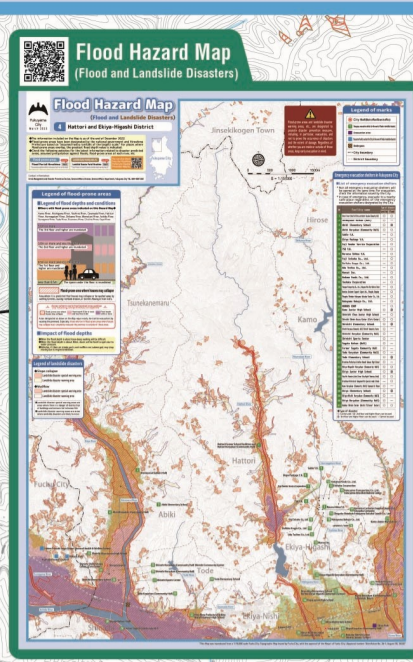
Inland Water Hazard Map

(Within the sewerage plan area)

3 Hattori and Ekiya-Higashi District

- This figure shows the anticipated extent and depth of flooding, as estimated by simulations based on the development status of sewerage facilities as of March 2025.
- This Hazard Map was created based on the maximum expected, rainfall (130 mm per hour), an amount of heavy rainfall that is thought to occur roughly once every 1,000 years.
- This diagram does not take into account river flooding, tsunamis, storm surges, or clogged drains. Therefore, actual flooding conditions may differ from those shown in this diagram.
- The colored areas are considered to be areas with a relatively high risk of flooding. Even areas without color may be flooded, so please take precautions early and act safely during heavy rain.

Contact information:
Waterworks Planning Division, Fukuyama City Waterworks and Sewerage Bureau Engineering Department
TEL:084-928-1090



City Hall (Main office/Branch office)	Water level station
Emergency evacuation shelter (in the event of flood or landslide disaster)	River monitoring cameras
Evacuation area	Rainfall observation center
Evacuation facility outside the City (in the event of flood or landslide disaster)	City boundary
Underpass	District boundary

No.	Facility name	Type of disaster	
		Landslide	Flood
1	Hattori Former School Facilities and Hattori Koryukan (Community Hall)	○	○
2	Shimoyasu Kaikan (Hall)	○	○
3	Abiki Elementary School	○	②
4	Sable Y.K.	-	○
5	Toshoku Corporation	-	○
6	Kodama Foods Co., Ltd.	-	○
7	Ekiya Package Y.K.	-	○
8	Fukuyama Transporting Co., Ltd., Fukuyama-Ekiya Distribution Center	-	○
9	Fuji Vender Service Corporation	-	○
10	Maruesu Shikou Y.K.	-	○
11	TSK Y.K.	-	○
12	Fuji Seisaku Co., Ltd.	-	○
13	Konatsu Customer Support Japan Ltd., Chugoku Company	-	○
14	Chugoku Shinban Fukuyama Seisaku Center Co., Ltd.	-	○
15	Abiki Koryukan (Community Hall)	○	○
16	Daifuku Kogyo Co., Ltd.	-	○
17	Uda Techno Co., Ltd.	-	○
18	Nakayama Bokujo Co., Ltd.	-	○
19	Kamo Junior High School	○	②
20	Mansei Inc.	-	○
21	HORKOS CORP	-	○
22	Shinichi Chuo Junior High School	-	○
23	Shinichi Koryukan (Community Hall) Shinichi Community Center	○	-
24	Shinichi Shinin Koryu Center (Civic Center)	○	○
25	Ekiya-Higashi Koryukan (Community Hall)	○	○
26	Shinichi Elementary School	○	③
27	Shinichi Koryukan (Community Hall)	○	-
28	Hiroshima Prefectural Fukuyama-Ekiya Special needs School	-	○
29	Shinichi Sports Center	○	-
30	Kamo Koryukan (Community Hall) Gymnastic Room	○	-
31	Ekiya-Ekiya Elementary School (Former Ekiya-Higashi Elementary School)	○	○
32	Ekiya Junior High School	○	②
33	Tode Koryukan (Community Hall)	○	-
34	Tode Elementary School	○	②
35	Hiroshima Prefectural Ashina Nanabi Gakuen High School	○	-
36	Sagata Kaikan (Hall)	○	-
37	Ekiya Elementary School	○	②
38	Former Sagata Community Hall	○	-
39	Ekiya-Nishi Koryukan (Community Hall)	○	-
40	Ekiya Koryukan (Community Hall)	○	-
41	Hokubu Shinin Center (North Citizens' Center)	○	○

Legend of flood-prone areas

Legend of flood depths and conditions

- 5.0m or more: The 3rd floor and higher are inundated.
- 3.0m or more and less than 5.0m: The 2nd floor and higher are inundated.
- 1.0m or more and less than 3.0m: The 1st floor and higher are inundated.
- 0.5m or more and less than 1.0m: The ground floor and higher are inundated.
- 0.3m or more and less than 0.5m: The ground floor and higher are inundated.
- 0.1m or more and less than 0.3m: The ground floor and higher are inundated.
- 0.01m or more and less than 0.1m: The ground floor and higher are inundated.

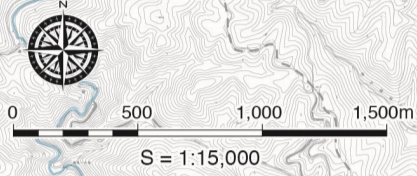
Within the sewerage plan area

Impact of flood depths

- When the flood depth is about 0.5m, walking will be difficult.
- When the flood depth is about 0.3m, doors will be hard to open due to water pressure.
- Vehicles, if their air intake ports and mufflers are submerged, may stop moving due to engine breakdown.

Facilities in Fukuyama City used by people with special needs

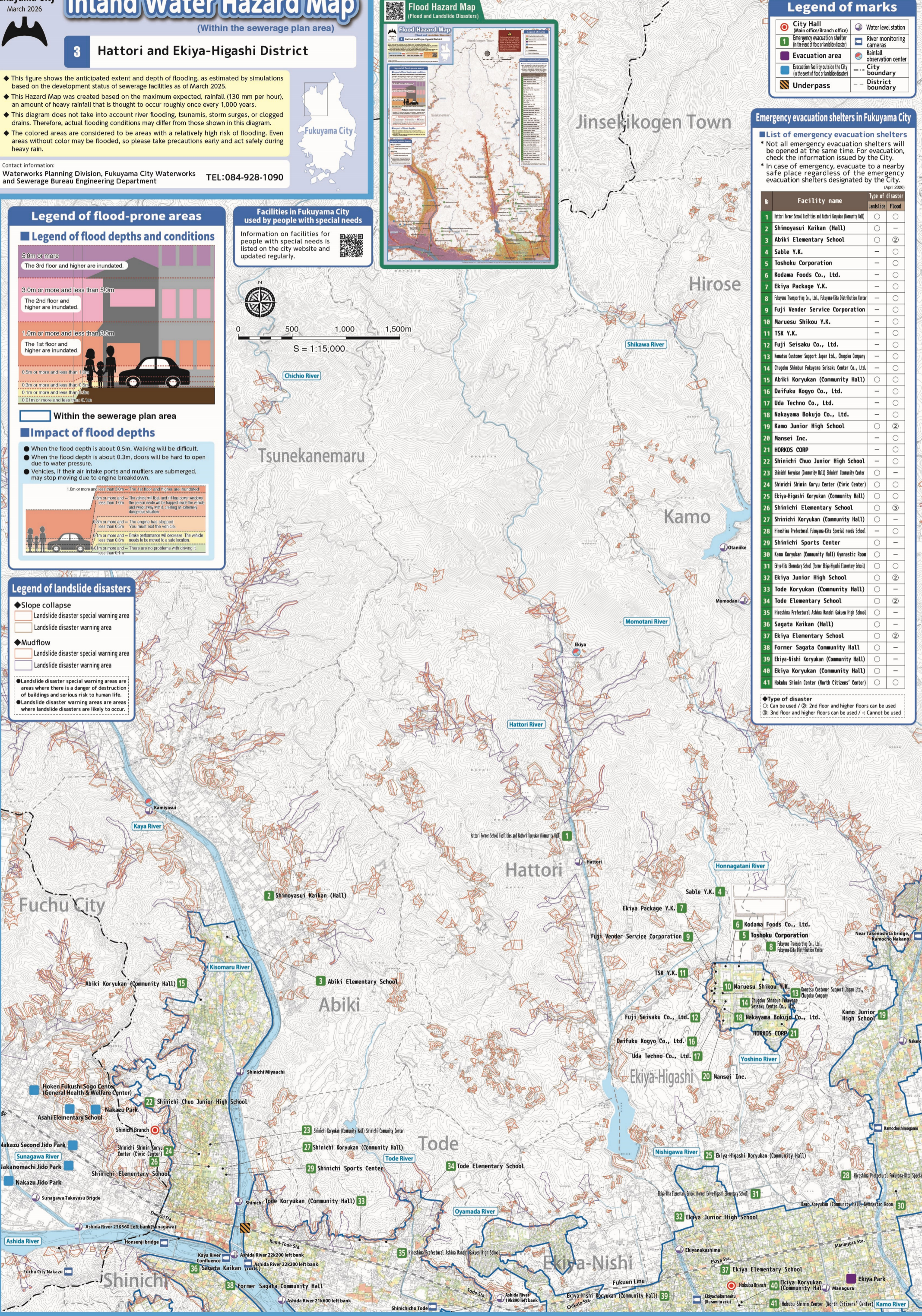
Information on facilities for people with special needs is listed on the city website and updated regularly.



Legend of landslide disasters

- Slope collapse**
 - Landslide disaster special warning area
 - Landslide disaster warning area
- Mudflow**
 - Landslide disaster special warning area
 - Landslide disaster warning area

● Landslide disaster special warning areas are areas where there is a danger of destruction of buildings and serious risk to human life.
● Landslide disaster warning areas are areas where landslide disasters are likely to occur.



*This Map was reproduced from a 1:10,000 scale Fuchu City Topographic Map issued by Fuchu City, with the approval of the Mayor of Fuchu City. (Approval number: Shireifunou No.26-3, March13, 2025)