

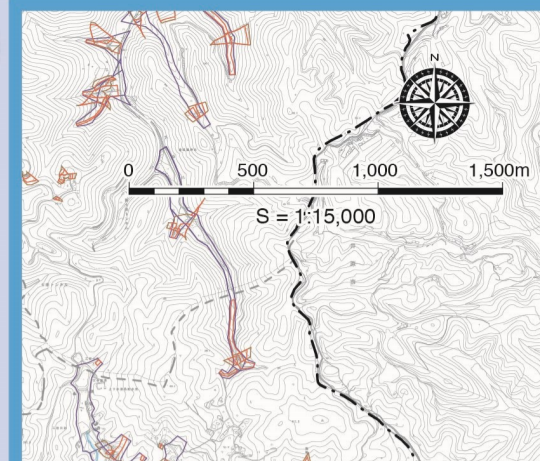
# Inland Water Hazard Map

(Within the sewerage plan area)

## 4 Chujo, Mino, Michinoue, Yuda, and Kannabe District

- This figure shows the anticipated extent and depth of flooding, as estimated by simulations based on the development status of sewerage facilities as of March 2025.
- This Hazard Map was created based on the maximum expected, rainfall (130 mm per hour), an amount of heavy rainfall that is thought to occur roughly once every 1,000 years.
- This diagram does not take into account river flooding, tsunamis, storm surges, or clogged drains. Therefore, actual flooding conditions may differ from those shown in this diagram.
- The colored areas are considered to be areas with a relatively high risk of flooding. Even areas without color may be flooded, so please take precautions early and act safely during heavy rain.

Contact information:  
Waterworks Planning Division, Fukuyama City Waterworks and Sewerage Bureau Engineering Department TEL:084-928-1090



### Emergency evacuation shelters in Fukuyama City

#### List of emergency evacuation shelters

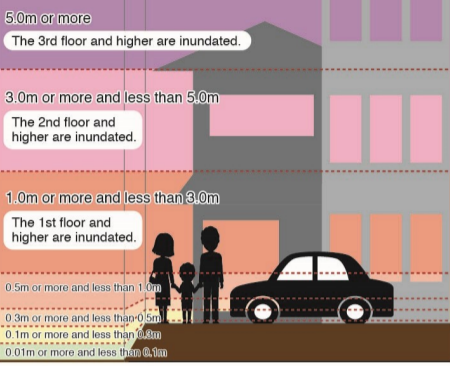
\* Not all emergency evacuation shelters will be opened at the same time. For evacuation, check the information issued by the City.  
\* In case of emergency, evacuate to a nearby safe place regardless of the emergency evacuation shelters designated by the City.

| No. | Facility name  | Type of disaster |       | No. | Facility name  | Type of disaster |       |
|-----|--|------------------|-------|-----|--|------------------|-------|
|     |  | Landslide        | Flood |     |  | Landslide        | Flood |
| 1   | Chujo Elementary School, Kitani Branch (Now closed)            | —                | ○     | 17  | Kannabe Junior High School                             | —                | ○     |
| 2   | Chujo Elementary School  | ○                | ②     | 18  | Kamo Koryukan (Community Hall) Gymnastic Room          | ○                | —     |
| 3   | Chujo Koryukan (Community Hall)                                | ○                | —     | 19  | Hiroshima Prefectural Kannabe Asahi Senior High School | —                | ○     |
| 4   | Kamo Koryukan (Community Hall)                                 | ○                | —     | 20  | Yuda Elementary School                                 | ○                | ③     |
| 5   | Kamo Elementary School   | ○                | ③     | 21  | Yuda Koryukan (Community Hall)                         | ○                | —     |
| 6   | Kamo Junior High School  | ○                | ②     | 22  | Fukuyama Heisei University                             | ○                | —     |
| 7   | Chujo Koryukan (Community Hall) Kannabe-Nishi Community Center | —                | ○     | 23  | Kannabe Shinin Koryu Center (Kannabe Civic Center)     | ○                | ○     |
| 8   | Mino Elementary School   | ○                | ②     | 24  | Fuji Grand Kannabe Multilevel Car Park                 | ○                | ○     |
| 9   | Mino Koryukan (Community Hall)                                 | ○                | —     | 25  | Fukuyama City Kannabe Cultural Hall                    | ○                | ○     |
| 10  | Fukuyama Transporting Co., Ltd., Kannabe Distribution Center   | ○                | —     | 26  | Kannabe-Nishi Junior High School                       | ○                | —     |
| 11  | Kannabe-Higashi Junior High School                             | ○                | ②     | 27  | Hiroshima Prefectural Kannabe High School              | —                | ②     |
| 12  | Michinoue Elementary School                                    | ○                | ○     | 28  | Miyuki Koryukan (Community Hall)                       | ○                | —     |
| 13  | Takehiro Elementary School                                     | ○                | ②     | 29  | Miyuki Elementary School                               | ○                | ④     |
| 14  | Michinoue Koryukan (Community Hall)                            | ○                | —     | 30  | Kannabe Elementary School                              | —                | ③     |
| 15  | Hiroshima Prefectural Fukuyama-Hita Special needs School       | —                | ○     | 31  | Kosen Junior High School                               | ○                | ③     |
| 16  | Takehiro Koryukan (Community Hall)                             | ○                | ○     | 32  | Eishin Junior and Senior High School                   | ○                | ○     |
|     |  |                  |       | 33  | Senda Elementary School                                | ○                | —     |
|     |  |                  |       | 34  | Senda Koryukan (Community Hall)                        | ③                | ③     |

◆ Type of disaster  
○ Can be used / ② 2nd floor and higher floors can be used / ③ 3rd floor and higher floors can be used / ④ 4th floor and higher floors can be used / - Cannot be used

### Legend of flood-prone areas

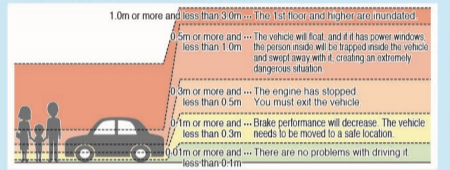
#### Legend of flood depths and conditions



Within the sewerage plan area

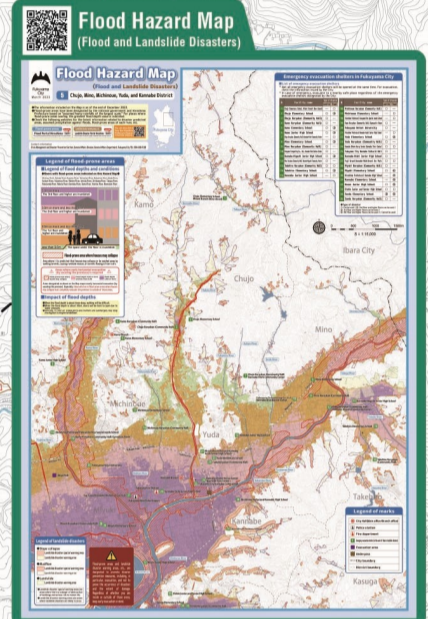
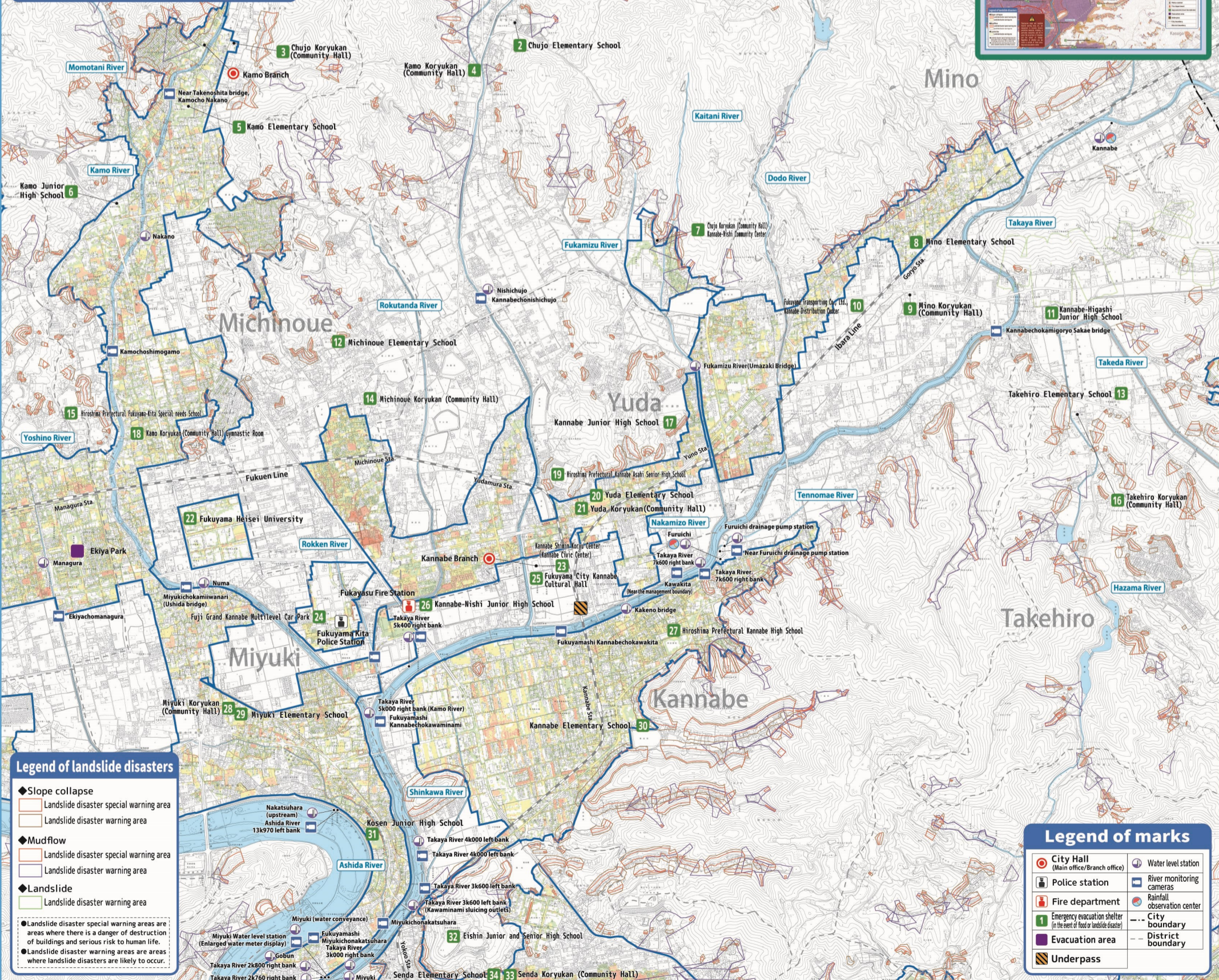
#### Impact of flood depths

- When the flood depth is about 0.5m, walking will be difficult.
- When the flood depth is about 0.3m, doors will be hard to open due to water pressure.
- Vehicles, if their air intake ports and mufflers are submerged, may stop moving due to engine breakdown.



### Facilities in Fukuyama City used by people with special needs

Information on facilities for people with special needs is listed on the city website and updated regularly.



### Legend of landslide disasters

- Slope collapse**
    - Landslide disaster special warning area
    - Landslide disaster warning area
  - Mudflow**
    - Landslide disaster special warning area
    - Landslide disaster warning area
  - Landslide**
    - Landslide disaster warning area
- Landslide disaster special warning areas are areas where there is a danger of destruction of buildings and serious risk to human life.  
● Landslide disaster warning areas are areas where landslides are likely to occur.

### Legend of marks

- City Hall (Main office/Branch office)
- Police station
- Fire department
- Emergency evacuation shelter (in the event of flood or landslide disaster)
- Evacuation area
- Underpass
- Water level station
- River monitoring cameras
- Rainfall observation center
- City boundary
- District boundary