

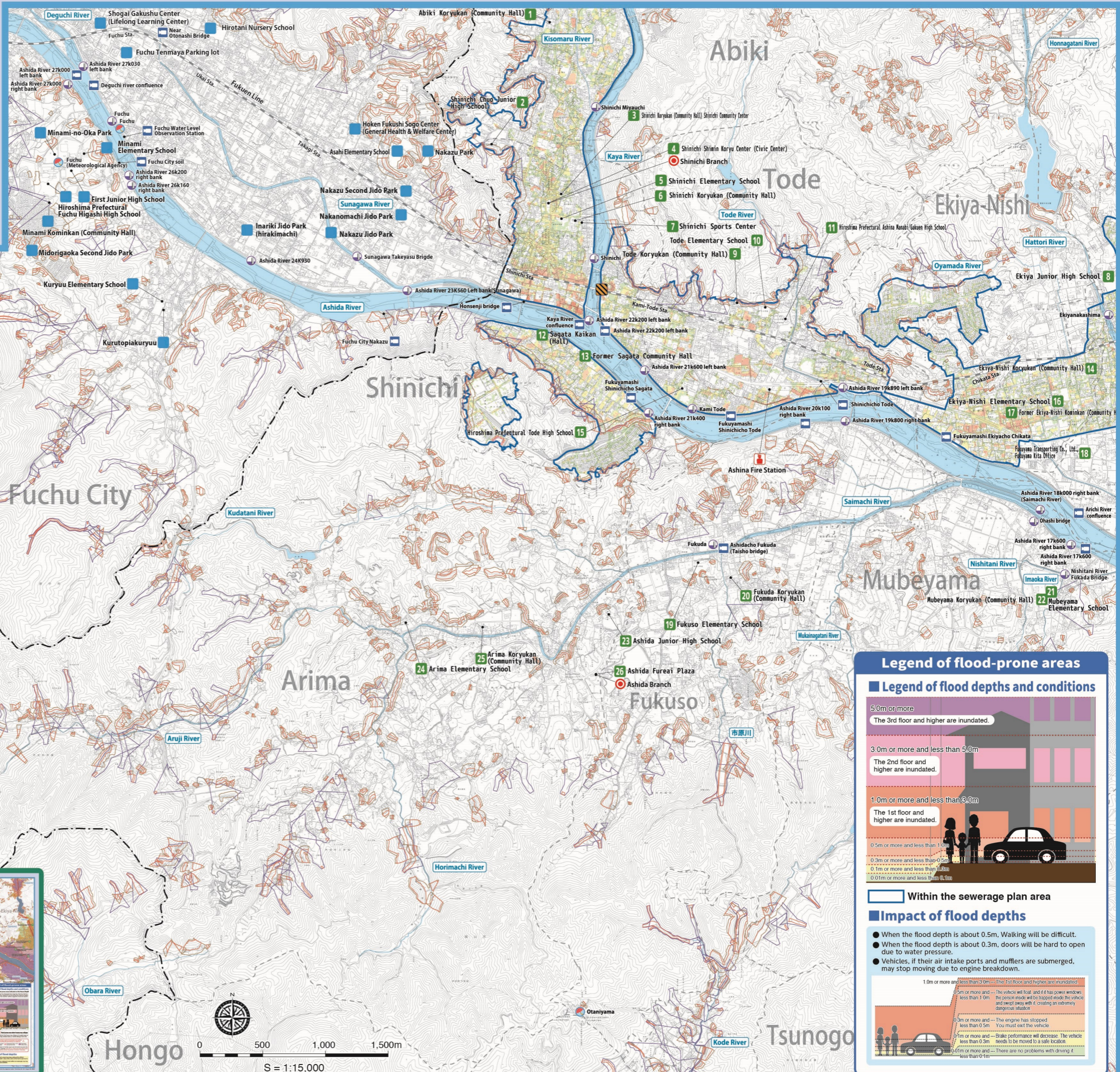
Inland Water Hazard Map

(Within the sewerage plan area)

5 Ekiya-Nishi, Tode, Shinichi, Arima, and Fukuso District

- ◆ This figure shows the anticipated extent and depth of flooding, as estimated by simulations based on the development status of sewerage facilities as of March 2025.
- ◆ This Hazard Map was created based on the maximum expected, rainfall (130 mm per hour), an amount of heavy rainfall that is thought to occur roughly once every 1,000 years.
- ◆ This diagram does not take into account river flooding, tsunamis, storm surges, or clogged drains. Therefore, actual flooding conditions may differ from those shown in this diagram.
- ◆ The colored areas are considered to be areas with a relatively high risk of flooding. Even areas without color may be flooded, so please take precautions early and act safely during heavy rain.

Contact information:
Waterworks Planning Division, Fukuyama City Waterworks and Sewerage Bureau Engineering Department
TEL:084-928-1090



Emergency evacuation shelters in Fukuyama City

- ◆ List of emergency evacuation shelters
- ◆ Not all emergency evacuation shelters will be opened at the same time. For evacuation, check the information issued by the City.
- ◆ In case of emergency, evacuate to a nearby safe place regardless of the emergency evacuation shelters designated by the City.

No.	Facility name	Type of disaster	
		Landslide	Flood
1	Abiki Koryukan (Community Hall)	○	○
2	Shinichi Chuo Junior High School	—	○
3	Shinichi Koryukan (Community Hall) Shinichi Community Center	○	—
4	Shinichi Shinin Koryu Center (Civic Center)	○	○
5	Shinichi Elementary School	○	③
6	Shinichi Koryukan (Community Hall)	○	—
7	Shinichi Sports Center	○	—
8	Ekiya Junior High School	○	②
9	Tode Koryukan (Community Hall)	○	—
10	Tode Elementary School	○	②
11	Hiroshima Prefectural Ashina Nanabi Gakuen High School	○	—
12	Sagata Kaikan (Hall)	○	—
13	Former Sagata Community Hall	○	—
14	Ekiya-Nishi Koryukan (Community Hall)	○	—
15	Hiroshima Prefectural Tode High School	○	—
16	Ekiya-Nishi Elementary School	○	②
17	Former Ekiya-Nishi Koninkan (Community Hall)	○	—
18	Fukuyama Transporting Co., Ltd., Fukuyama Kita Office	○	—
19	Fukuso Elementary School	○	②
20	Fukuda Koryukan (Community Hall)	○	○
21	Mubeyama Elementary School	○	—
22	Mubeyama Koryukan (Community Hall)	—	②
23	Ashida Junior High School	○	○
24	Arima Elementary School	○	②
25	Arima Koryukan (Community Hall)	○	—
26	Ashida Fureai Plaza	○	○

◆ Type of disaster
○: Can be used / ②: 2nd floor and higher floors can be used
③: 3rd floor and higher floors can be used / -: Cannot be used

Facilities in Fukuyama City used by people with special needs

Information on facilities for people with special needs is listed on the city website and updated regularly.

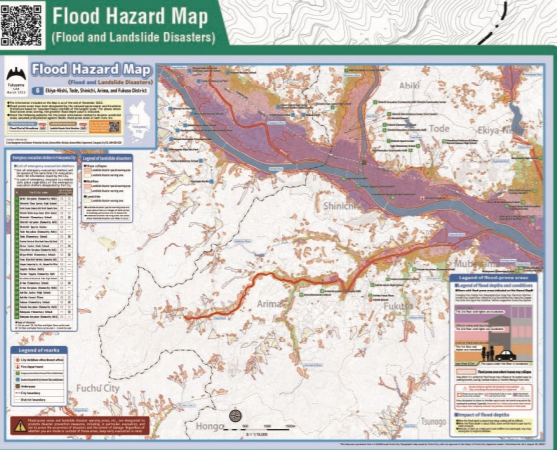


Legend of landslide disasters

- ◆ Slope collapse
 - Red outline: Landslide disaster special warning area
 - Orange outline: Landslide disaster warning area
 - ◆ Mudflow
 - Red outline: Landslide disaster special warning area
 - Orange outline: Landslide disaster warning area
 - ◆ Landslide
 - Red outline: Landslide disaster special warning area
 - Orange outline: Landslide disaster warning area
- Landslide disaster special warning areas are areas where there is a danger of destruction of buildings and serious risk to human life.
● Landslide disaster warning areas are areas where landslides are likely to occur.

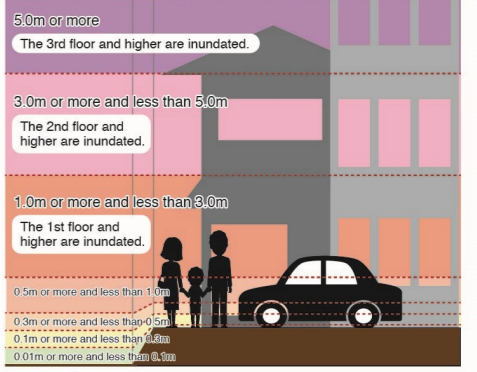
Legend of marks

- City Hall (Main office/Branch office)
- Fire department
- Emergency evacuation shelter (in the event of flood or landslide disaster)
- Evacuation facility outside the City (in the event of flood or landslide disaster)
- Underpass
- Water level station
- River monitoring cameras
- City boundary
- District boundary



Legend of flood-prone areas

Legend of flood depths and conditions



Impact of flood depths

- When the flood depth is about 0.5m, walking will be difficult.
 - When the flood depth is about 0.3m, doors will be hard to open due to water pressure.
 - Vehicles, if their air intake ports and mufflers are submerged, may stop moving due to engine breakdown.
- 1.0m or more and less than 3.0m: The 1st floor and higher are inundated. The vehicle will float and if it has power windows, the person inside will be trapped inside the vehicle and swept away with it, creating an extremely dangerous situation.
- 0.3m or more and less than 0.5m: The engine has stopped. You must exit the vehicle.
- 0.1m or more and less than 0.3m: Brake performance will decrease. The vehicle needs to be moved to a safe location.
- 0.01m or more and less than 0.1m: There are no problems with driving it.

This Map was reproduced from a 1:10,000 scale Fuchu City Topographic Map issued by Fuchu City, with the approval of the Mayor of Fuchu City. (Appraisal number: Shireifukan No.26-3, March 13, 2026)