

Inland Water Hazard Map

(Within the sewerage plan area)

6 Ekiya, Mubeyama, Miyuki, Izumi, Senda, Hisamatsudai, Jutoku, Zao, Sakuragaoka, Nishi-Fukatsu, Fukatsu, and Higashi District

- This figure shows the anticipated extent and depth of flooding, as estimated by simulations based on the development status of sewerage facilities as of March 2025.
- This Hazard Map was created based on the maximum expected, rainfall (130 mm per hour), an amount of heavy rainfall that is thought to occur roughly once every 1,000 years.
- This diagram does not take into account river flooding, tsunamis, storm surges, or clogged drains. Therefore, actual flooding conditions may differ from those shown in this diagram.
- The colored areas are considered to be areas with a relatively high risk of flooding. Even areas without color may be flooded, so please take precautions early and act safely during heavy rain.

Contact information:
Waterworks Planning Division, Fukuyama City Waterworks and Sewerage Bureau Engineering Department
TEL:084-928-1090



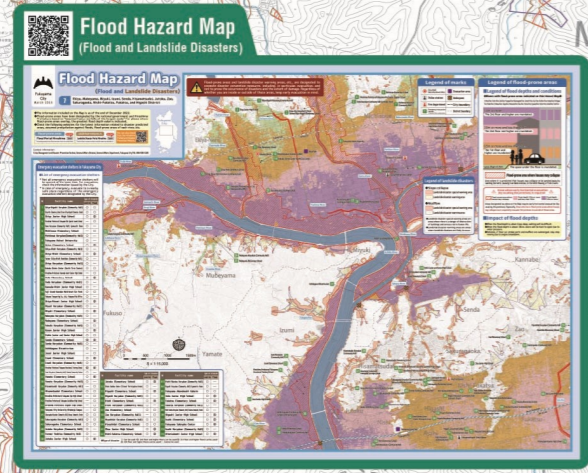
Emergency evacuation shelters in Fukuyama City

- List of emergency evacuation shelters
- Not all emergency evacuation shelters will be opened at the same time. For evacuation, check the information issued by the City.
- In case of emergency, evacuate to a nearby safe place regardless of the emergency evacuation shelters designated by the City.

(April 2025)

No.	Facility name	Type of disaster	
		Landslide	Flood
1	Michinoue Elementary School	○	○
2	Ekiya-Higashi Koryukan (Community Hall)	○	○
3	Michinoue Koryukan(Community Hall)	○	○
4	Hiroshima Prefectural Fukuyama-Kita Special needs School	○	○
5	Kamo Koryukan (Community Hall) Gymnastic Room	○	○
6	Ekiya-Kita Elementary School (Former Ekiya-Higashi Elementary School)	○	○
7	Ekiya Junior High School	○	②
8	Hiroshima Prefectural Kannabe Asahi Senior High School	○	○
9	Yuda Elementary School	○	③
10	Yuda Koryukan (Community Hall)	○	○
11	Fukuyama Heisei University	○	○
12	Ekiya Elementary School	○	②
13	Kannabe Shinin Koryu Center (Kannabe Civic Center)	○	○
14	Fuji Grand Kannabe Multi-level Car Park	○	○
15	Ekiya-Nishi Koryukan (Community Hall)	○	○
16	Fukuyama City Kannabe Cultural Hall	○	○
17	Ekiya Koryukan (Community Hall)	○	○
18	Hokubu Shimin Center (North Civic Center)	○	○
19	Ekiya-Nishi Elementary School	○	②
20	Kannabe-Nishi Junior High School	○	○
21	Former Ekiya-Nishi Koninkan (Community Hall)	○	○
22	Fukuyama Transporting Co., Ltd., Fukuyama Kita Office	○	○
23	Ekiya-Minami Junior High School	○	③
24	Miyuki Koryukan (Community Hall)	○	○
25	Miyuki Elementary School	○	④
26	Fukuda Koryukan (Community Hall)	○	○
27	Mubeyama Koryukan (Community Hall)	○	○
28	Mubeyama Elementary School	○	②
29	Kosen Junior High School	○	③
30	Eishin Junior and Senior High School	○	○
31	Senda Koryukan (Community Hall)	○	○
32	Senda Elementary School	③	③
33	Ashidagawa Mirumiru-kan	○	○
34	Hiyoshidai Koryukan (Community Hall)	○	○
35	Hiyoshidai Elementary School	○	○
36	Zao Elementary School	○	○
37	Zao Koryukan (Community Hall)	○	○
38	Hisamatsudai Elementary School	○	○
39	Hisamatsudai Koryukan (Community Hall)	○	○
40	Hiroshima Prefectural Fukuyama Seishin High School	○	○
41	Hiroshima Prefectural Higashi High School	○	○
42	Hiroshima Prefectural Fukuyama Iyo High School	○	○
43	Chuo Junior High School	○	○
44	Sakuragaoka Koryukan (Community Hall) Baraz Community Center	○	○
45	Sakuragaoka Elementary School	○	○
46	Fukuyama City University Kitahonjo Campus	○	○
47	Izumi Elementary School	○	④
48	Sakuragaoka Elementary School	○	○
49	Izumi Koryukan (Community Hall)	○	○
50	Josai Junior High School	○	○
51	Nishi-Fukatsu Koryukan (Community Hall) Fukatsu Community Center	○	○
52	Nishi-Fukatsu Elementary School	○	○
53	Former Yoshizu Community Hall	○	○
54	Joto Junior High School	○	○
55	Jutoku Elementary School	○	○
56	Hiroshima Prefectural Fukuyama Vocational Training School	④	④
57	Fukuyama Akenohoshi Gakuin	○	○
58	Fukatsu Elementary School	○	○
59	Johoku Junior High School	○	○
60	Fukatsu Koryukan (Community Hall)	○	○
61	Jutoku Elementary School	○	○
62	Nishi-Fukatsu Koryukan (Community Hall) Fukatsu Community Center	○	○
63	Higashi Elementary School	○	○
64	Higashi Koryukan (Community Hall)	○	○
65	Shinji Sankaku Center (Citizens' Participation Center)	○	○
66	Yamate Elementary School	○	②
67	Fukuyama Akenohoshi Gakuin	○	○
68	Fukuyama Transporting Co., Ltd., Fukuyama Distribution Center	○	○
69	Fukuyama Sukoyaka Center	○	②
70	Yamate Koryukan (Community Hall)	○	○
71	Asahi Elementary School	○	②
72	Asahi Koryukan (Community Hall)	○	○
73	Hitotsubashi Junior High School	○	③
74	Nishi Elementary School	○	③
75	Nishi Koryukan (Community Hall)	○	○
76	Fukuyama City University Kitahonjo Campus	○	○
77	Higashi Junior High School	○	○
78	Fukuyama Akenohoshi Gakuin	○	○
79	Fukuyama Sukoyaka Center	○	○
80	Fukuyama Transporting Co., Ltd., Fukuyama Distribution Center	○	○
81	Asahi Elementary School	○	○
82	Nishi-Fukatsu Koryukan (Community Hall) Fukatsu Community Center	○	○
83	Higashi Elementary School	○	○
84	Higashi Koryukan (Community Hall)	○	○
85	Shinji Sankaku Center (Citizens' Participation Center)	○	○
86	Yamate Elementary School	○	○
87	Fukuyama Akenohoshi Gakuin	○	○
88	Fukuyama Transporting Co., Ltd., Fukuyama Distribution Center	○	○
89	Asahi Elementary School	○	○
90	Nishi-Fukatsu Koryukan (Community Hall) Fukatsu Community Center	○	○
91	Higashi Elementary School	○	○
92	Higashi Koryukan (Community Hall)	○	○
93	Shinji Sankaku Center (Citizens' Participation Center)	○	○
94	Yamate Elementary School	○	○
95	Fukuyama Akenohoshi Gakuin	○	○
96	Fukuyama Transporting Co., Ltd., Fukuyama Distribution Center	○	○
97	Asahi Elementary School	○	○
98	Nishi-Fukatsu Koryukan (Community Hall) Fukatsu Community Center	○	○
99	Higashi Elementary School	○	○
100	Higashi Koryukan (Community Hall)	○	○
101	Shinji Sankaku Center (Citizens' Participation Center)	○	○
102	Yamate Elementary School	○	○
103	Fukuyama Akenohoshi Gakuin	○	○
104	Fukuyama Transporting Co., Ltd., Fukuyama Distribution Center	○	○
105	Asahi Elementary School	○	○
106	Nishi-Fukatsu Koryukan (Community Hall) Fukatsu Community Center	○	○
107	Higashi Elementary School	○	○
108	Higashi Koryukan (Community Hall)	○	○
109	Shinji Sankaku Center (Citizens' Participation Center)	○	○
110	Yamate Elementary School	○	○
111	Fukuyama Akenohoshi Gakuin	○	○
112	Fukuyama Transporting Co., Ltd., Fukuyama Distribution Center	○	○
113	Asahi Elementary School	○	○
114	Nishi-Fukatsu Koryukan (Community Hall) Fukatsu Community Center	○	○
115	Higashi Elementary School	○	○
116	Higashi Koryukan (Community Hall)	○	○
117	Shinji Sankaku Center (Citizens' Participation Center)	○	○
118	Yamate Elementary School	○	○
119	Fukuyama Akenohoshi Gakuin	○	○
120	Fukuyama Transporting Co., Ltd., Fukuyama Distribution Center	○	○
121	Asahi Elementary School	○	○
122	Nishi-Fukatsu Koryukan (Community Hall) Fukatsu Community Center	○	○
123	Higashi Elementary School	○	○
124	Higashi Koryukan (Community Hall)	○	○
125	Shinji Sankaku Center (Citizens' Participation Center)	○	○
126	Yamate Elementary School	○	○
127	Fukuyama Akenohoshi Gakuin	○	○
128	Fukuyama Transporting Co., Ltd., Fukuyama Distribution Center	○	○
129	Asahi Elementary School	○	○
130	Nishi-Fukatsu Koryukan (Community Hall) Fukatsu Community Center	○	○
131	Higashi Elementary School	○	○
132	Higashi Koryukan (Community Hall)	○	○
133	Shinji Sankaku Center (Citizens' Participation Center)	○	○
134	Yamate Elementary School	○	○
135	Fukuyama Akenohoshi Gakuin	○	○
136	Fukuyama Transporting Co., Ltd., Fukuyama Distribution Center	○	○
137	Asahi Elementary School	○	○
138	Nishi-Fukatsu Koryukan (Community Hall) Fukatsu Community Center	○	○
139	Higashi Elementary School	○	○
140	Higashi Koryukan (Community Hall)	○	○
141	Shinji Sankaku Center (Citizens' Participation Center)	○	○
142	Yamate Elementary School	○	○
143	Fukuyama Akenohoshi Gakuin	○	○
144	Fukuyama Transporting Co., Ltd., Fukuyama Distribution Center	○	○
145	Asahi Elementary School	○	○
146	Nishi-Fukatsu Koryukan (Community Hall) Fukatsu Community Center	○	○
147	Higashi Elementary School	○	○
148	Higashi Koryukan (Community Hall)	○	○
149	Shinji Sankaku Center (Citizens' Participation Center)	○	○
150	Yamate Elementary School	○	○
151	Fukuyama Akenohoshi Gakuin	○	○
152	Fukuyama Transporting Co., Ltd., Fukuyama Distribution Center	○	○
153	Asahi Elementary School	○	○
154	Nishi-Fukatsu Koryukan (Community Hall) Fukatsu Community Center	○	○
155	Higashi Elementary School	○	○
156	Higashi Koryukan (Community Hall)	○	○
157	Shinji Sankaku Center (Citizens' Participation Center)	○	○
158	Yamate Elementary School	○	○
159	Fukuyama Akenohoshi Gakuin	○	○
160	Fukuyama Transporting Co., Ltd., Fukuyama Distribution Center	○	○
161	Asahi Elementary School	○	○
162	Nishi-Fukatsu Koryukan (Community Hall) Fukatsu Community Center	○	○
163	Higashi Elementary School	○	○
164	Higashi Koryukan (Community Hall)	○	○
165	Shinji Sankaku Center (Citizens' Participation Center)	○	○
166	Yamate Elementary School	○	○
167	Fukuyama Akenohoshi Gakuin	○	○
168	Fukuyama Transporting Co., Ltd., Fukuyama Distribution Center	○	○
169	Asahi Elementary School	○	○
170	Nishi-Fukatsu Koryukan (Community Hall) Fukatsu Community Center	○	○
171	Higashi Elementary School	○	○
172	Higashi Koryukan (Community Hall)	○	○
173	Shinji Sankaku Center (Citizens' Participation Center)	○	○
174	Yamate Elementary School	○	○
175	Fukuyama Akenohoshi Gakuin	○	○
176	Fukuyama Transporting Co., Ltd., Fukuyama Distribution Center	○	○
177	Asahi Elementary School	○	○
178	Nishi-Fukatsu Koryukan (Community Hall) Fukatsu Community Center	○	○
179	Higashi Elementary School	○	○
180	Higashi Koryukan (Community Hall)	○	○
181	Shinji Sankaku Center (Citizens' Participation Center)	○	○
182	Yamate Elementary School	○	○
183	Fukuyama Akenohoshi Gakuin	○	○
184	Fukuyama Transporting Co., Ltd., Fukuyama Distribution Center	○	○
185	Asahi Elementary School	○	○
186	Nishi-Fukatsu Koryukan (Community Hall) Fukatsu Community Center	○	○
187	Higashi Elementary School	○	○
188	Higashi Koryukan (Community Hall)	○	○
189	Shinji Sankaku Center (Citizens' Participation Center)	○	○
190	Yamate Elementary School	○	○
191	Fukuyama Akenohoshi Gakuin	○	○
192	Fukuyama Transporting Co., Ltd., Fukuyama Distribution Center	○	○
193	Asahi Elementary School	○	○
194	Nishi-Fukatsu Koryukan (Community Hall) Fukatsu Community Center	○	○
195	Higashi Elementary School	○	○
196	Higashi Koryukan (Community Hall)	○	○
197	Shinji Sankaku Center (Citizens' Participation Center)	○	○
198	Yamate Elementary School	○	○
199	Fukuyama Akenohoshi Gakuin	○	○
200	Fukuyama Transporting Co., Ltd., Fukuyama Distribution Center	○	○

◆ Type of disaster ○: Can be used / ②: 2nd floor and higher floors can be used / ③: 3rd floor and higher floors can be used / ④: 4th floor and higher floors can be used / - : Cannot be used



No.	Facility name	Type of disaster	No.	Facility name	Type of disaster
		Landslide Flood			Landslide Flood
51	Nishi-Fukatsu Koryukan (Community Hall)	○ ②	64	Higashi Koryukan (Community Hall)	○ -
52	Nishi-Fukatsu Elementary School	○ -	65	Shinin Sankaku Center (Citizens' Participation Center)	○ -
53	Former Yoshizu Community Hall	○ -	66	Yamate Elementary School	○ ④
54	Joto Junior High School	○ ③	67	Higashi Junior High School	○ ③
55	Jutoku Koryukan (Community Hall)	○ -	68	Fukuyama Transporting Co., Ltd., Fukuyama Distribution Center	○ -
56	Hiroshima Prefectural Fukuyama Vocational Training School	④ ④	69	Fukuyama Sukoyaka Center	○ ②
57	Fukuyama Akenohoshi Gakuin	○ ②	70	Yamate Koryukan (Community Hall)	○ -
58	Fukatsu Elementary School	○ ②	71	Asahi Elementary School	○ ②
59	Johoku Junior High School	○ ④	72	Asahi Koryukan (Community Hall)	○ -
60	Fukatsu Koryukan (Community Hall)	○ -	73	Hitotsubashi Junior High School	○ ③
61	Jutoku Elementary School	○ ③	74	Nishi Elementary School	○ ③
62	Nishi-Fukatsu Koryukan (Community Hall) Fukatsu Community Center	○ -	75	Nishi Koryukan (Community Hall)	○ -
63	Higashi Elementary School	○ ②			

Facilities in Fukuyama City used by people with special needs

Information on facilities for people with special needs is listed on the city website and updated regularly.



Legend of flood-prone areas

Legend of flood depths and conditions

- 5.0m or more: The 3rd floor and higher are inundated.
- 3.0m or more and less than 5.0m: The 2nd floor and higher are inundated.
- 1.0m or more and less than 3.0m: The 1st floor and higher are inundated.
- 0.5m or more and less than 1.0m: The vehicle will float and if it has power windows, the person inside will be trapped inside the vehicle and swept away with it, causing an extremely dangerous situation.
- 0.3m or more and less than 0.5m: The original has stopped. You must exit the vehicle.
- 0.1m or more and less than 0.3m: Brake performance will decrease. The vehicle needs to be moved to a safe location.
- 0.01m or more and less than 0.1m: There are no problems with driving it.

Impact of flood depths

- When the flood depth is about 0.5m, walking will be difficult.
- When the flood depth is about 0.3m, doors will be hard to open due to water pressure.
- Vehicles, if their air intake ports and mufflers are submerged, may stop moving due to engine breakdown.

Legend of marks

- City Hall (Main office/Branch office)
- Police station
- Fire department
- Emergency evacuation shelter (In the event of flood or landslide disaster)
- Evacuation area
- Underpass
- Water level station
- River monitoring cameras
- Rainfall observation center
- City boundary
- District boundary

Legend of landslide disasters

- Slope collapse
- Landslide disaster special warning area
- Landslide disaster warning area
- Mudflow
- Landslide disaster special warning area
- Landslide disaster warning area

● Landslide disaster special warning areas are areas where there is a danger of destruction of buildings and serious risk to human life.
● Landslide disaster warning areas are areas where landslides are likely to occur.

