

Inland Water Hazard Map

(Within the sewerage plan area)

8 Hongo, Kamura, Higashimura, Imazu, Takanishi, Matsunaga, and Yanaizu District

- This figure shows the anticipated extent and depth of flooding, as estimated by simulations based on the development status of sewerage facilities as of March 2025.
- This Hazard Map was created based on the maximum expected rainfall (130 mm per hour), an amount of heavy rainfall that is thought to occur roughly once every 1,000 years.
- This diagram does not take into account river flooding, tsunamis, storm surges, or clogged drains. Therefore, actual flooding conditions may differ from those shown in this diagram.
- The colored areas are considered to be areas with a relatively high risk of flooding. Even areas without color may be flooded, so please take precautions early and act safely during heavy rain.

Contact information:
Waterworks Planning Division, Fukuyama City Waterworks and Sewerage Bureau Engineering Department
TEL:084-928-1090

Legend of marks

	City Hall(Main office/Branch office)		Water level station
	Police station		River monitoring camera
	Fire department		Rainfall observation center
	Emergency evacuation shelter (in the event of flood or landslide disaster)		City boundary
	Evacuation facility outside the City (in the event of flood or landslide disaster)		District boundary
	Underpass		

Emergency evacuation shelters in Fukuyama City

List of emergency evacuation shelters

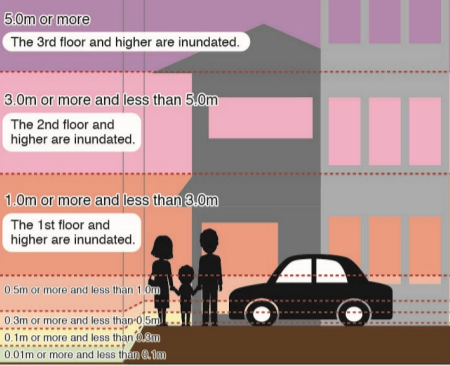
* Not all emergency evacuation shelters will be opened at the same time. For evacuation, check the information issued by the City.
* In case of emergency, evacuate to a nearby safe place regardless of the emergency evacuation shelters designated by the City.

No.	Facility name	Type of disaster		No.	Facility name	Type of disaster	
		Landslide	Flood			Landslide	Flood
1	Hongo Elementary School	○	○	17	Seibu Shinin Center (West Civic Center)	○	○
2	Hongo Koryukan (Community Hall)	○	○	18	Matsunaga Koryukan (Community Hall)	○	○
3	Former Kamura 12-ku Community Hall	○	○	19	Matsunaga Koryukan (Community Hall) Matsunaga Community Center	○	○
4	Akasaka Koryukan (Community Hall)	○	②	20	Takanishi Koryukan (Community Hall)	○	○
5	Akasaka Elementary School	○	○	21	Matsunaga Junior High School	○	②
6	Higashimura Former School Facilities	○	○	22	Matsunaga Elementary School	○	②
7	Hongo Koryukan (Community Hall) Hongo Community Center	○	○	23	Nishi Koryukan (Community Hall) Takanishi Community Center	○	②
8	Higashimura Koryukan (Community Hall)	○	○	24	Yanaizu Fureai Plaza	○	○
9	Hiroshima Prefectural Matsunaga High School	○	○	25	Yanaizu Koryukan (Community Hall)	○	○
10	Kamura Koryukan (Community Hall) Kamura Community Center	○	○	26	Yanaizu Elementary School	○	○
11	Fukuyama University	○	○	27	Kanae Koryukan (Community Hall)	○	○
12	Kamura Elementary School	○	○	28	Kanae Elementary School	○	②
13	Kamura Koryukan (Community Hall)	○	○	29	Seika Junior High School	○	○
14	Taiseikan Junior High School	○	○	30	Fukuyama Transporting Co., Ltd., Onomichi Office	○	○
15	Dogoku Elementary School (former Imazu Elementary School)	○	○	31	Fujie Elementary School	○	○
16	Imazu Koryukan (Community Hall)	○	○				

○: Can be used / ②: 2nd floor and higher floors can be used / -: Cannot be used

Legend of flood-prone areas

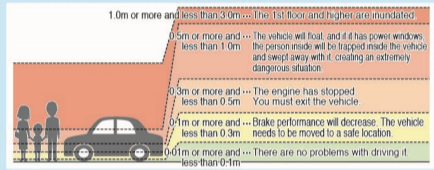
Legend of flood depths and conditions



Within the sewerage plan area

Impact of flood depths

- When the flood depth is about 0.5m, walking will be difficult.
- When the flood depth is about 0.3m, doors will be hard to open due to water pressure.
- Vehicles, if their air intake ports and mufflers are submerged, may stop moving due to engine breakdown.



Facilities in Fukuyama City used by people with special needs

Information on facilities for people with special needs is listed on the city website and updated regularly.



Legend of landslide disasters

- Slope collapse**
 - Landslide disaster special warning area
 - Landslide disaster warning area
 - Mudflow**
 - Landslide disaster special warning area
 - Landslide disaster warning area
 - Landslide**
 - Landslide disaster warning area
- Landslide disaster special warning areas are areas where there is a danger of destruction of buildings and serious risk to human life.
● Landslide disaster warning areas are areas where landslides are likely to occur.

Flood Hazard Map (Flood and Landslide Disasters)

