

Inland Water Hazard Map

(Within the sewerage plan area)

9 Yamate, Tsunogo, Akasaka, Nishi, Myoodai, Hikari, Seto, and Kasumi District

- This figure shows the anticipated extent and depth of flooding, as estimated by simulations based on the development status of sewerage facilities as of March 2025.
- This Hazard Map was created based on the maximum expected rainfall (130 mm per hour), an amount of heavy rainfall that is thought to occur roughly once every 1,000 years.
- This diagram does not take into account river flooding, tsunamis, storm surges, or clogged drains. Therefore, actual flooding conditions may differ from those shown in this diagram.
- The colored areas are considered to be areas with a relatively high risk of flooding. Even areas without color may be flooded, so please take precautions early and act safely during heavy rain.



Contact information:
Waterworks Planning Division, Fukuyama City Waterworks and Sewerage Bureau Engineering Department
TEL:084-928-1090

Facilities in Fukuyama City used by people with special needs

Information on facilities for people with special needs is listed on the city website and updated regularly.



Legend of landslide disasters

- Slope collapse**
 - Landslide disaster special warning area
 - Landslide disaster warning area
- Mudflow**
 - Landslide disaster special warning area
 - Landslide disaster warning area

● Landslide disaster special warning areas are areas where there is a danger of destruction of buildings and serious risk to human life.
● Landslide disaster warning areas are areas where landslides are likely to occur.

Emergency evacuation shelters in Fukuyama City

List of emergency evacuation shelters

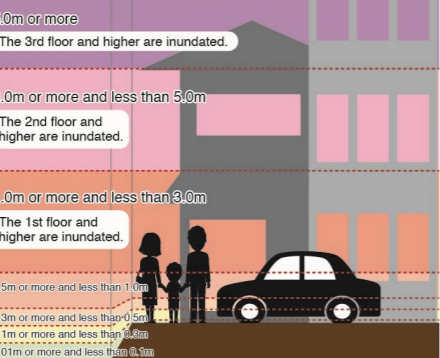
* Not all emergency evacuation shelters will be opened at the same time. For evacuation, check the information issued by the City.
* In case of emergency, evacuate to a nearby safe place regardless of the emergency evacuation shelters designated by the City.

No.	Facility name	Type of disaster	
		Landslide	Flood
1	Hisamatsudai Elementary School	○	○
2	Hisamatsudai Koryukan (Community Hall)	—	○
3	Hiroshima Prefectural Fukuyama Seishikan High School	—	○
4	Hiroshima Prefectural Higashi High School	—	○
5	Hiroshima Prefectural Fukuyama Iyo High School	—	○
6	Sakuragaoka Koryukan (Community Hall) Karu Community Center	○	○
7	Sakuragaoka Koryukan (Community Hall)	○	○
8	Fukuyama City University Kitahonjo Campus	—	○
9	Izumi Elementary School	○	④
10	Sakuragaoka Elementary School	○	○
11	Izumi Koryukan (Community Hall)	○	—
12	Josai Junior High School	—	○
13	Former Yoshizu Community Hall	○	—
14	Jutoku Koryukan (Community Hall)	○	—
15	Hiroshima Prefectural Fukuyama Vocational Training School	④	④
16	Johoku Junior High School	○	④
17	Jutoku Elementary School	○	③
18	Higashi Koryukan (Community Hall)	○	—
19	Shinin Sankaku Center (Citizens' Participation Center)	○	—
20	Yamate Elementary School	○	④
21	Yamate Koryukan (Community Hall)	○	—
22	Nishi Elementary School	○	③
23	Nishi Koryukan (Community Hall)	○	—
24	Tsunogo Elementary School	○	○
25	Nishi Koryukan (Community Hall) Hojo Community Center	○	—
26	Fukuyama City Human Rights Exchange Center	○	—
27	Minami Elementary School	○	③
28	Tsunogo Koryukan (Community Hall)	○	②
29	Kasumi Koryukan (Community Hall)	○	—
30	Manabi no Yakata Rose Com	○	○
31	Kasumi Elementary School	○	③
32	Kinki University Hiroshima High/Junior High School, Fukuyama	—	○
33	Minami Koryukan (Community Hall)	○	—
34	Fukuyama Rinsho Kensa Center Co., Ltd.	—	③
35	Myoodai Elementary School	○	○
36	Myoodai Koryukan (Community Hall)	○	○
37	Jonan Junior High School	○	③
38	Seto Koryukan (Community Hall) Seto Community Center	○	—
39	Hikari Koryukan (Community Hall)	○	—
40	Hiroshima Prefectural Fukuyama Technical High School	○	③
41	Takatori Junior High School	○	③
42	Seibi Junior High School	—	○
43	Hiroshima Prefectural Fukuyama Myoodai High School	○	○
44	Hikari Elementary School	○	③
45	Seto Elementary School	○	○
46	Seto Koryukan (Community Hall)	—	○
47	Fukuyama City Gymnasium (F-Pico Arena Fukuyama)	○	②
48	Fukuyama Municipal Fukuyama Junior and Senior High School	○	②
49	Akasaka Elementary School	○	②
50	Akasaka Koryukan (Community Hall)	○	②
51	Kanura Koryukan (Community Hall) Kanura Community Center	—	○

○ Type of disaster
● Can be used / ○ 2nd floor and higher floors can be used
③ 3rd floor and higher floors can be used
④ 4th floor and higher floors can be used / - Cannot be used

Legend of flood-prone areas

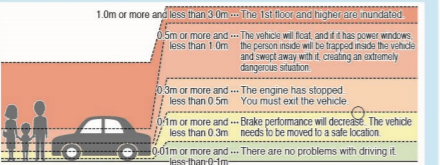
Legend of flood depths and conditions



Within the sewerage plan area

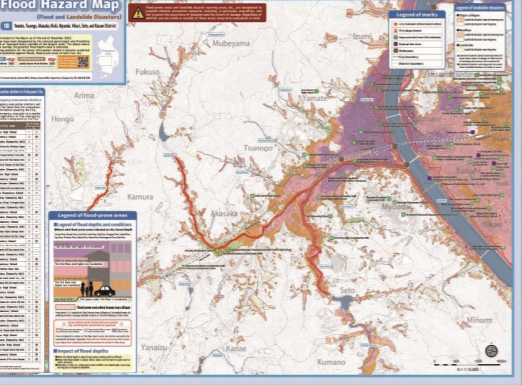
Impact of flood depths

- When the flood depth is about 0.5m, walking will be difficult.
- When the flood depth is about 0.3m, doors will be hard to open due to water pressure.
- Vehicles, if their air intake ports and mufflers are submerged, may stop moving due to engine breakdown.



Flood Hazard Map

(Flood and Landslide Disasters)



Legend of marks

- City Hall (Main office/Branch office)
- Fire department
- Emergency evacuation shelter (in the event of flood or landslide disaster)
- Evacuation area
- Underpass
- Water level station
- River monitoring cameras
- Rainfall observation center
- City boundary
- District boundary

