

# Inland Water Hazard Map

(Within the sewerage plan area)

## 11 Minomi, Minoshima, and Takashima District

- This figure shows the anticipated extent and depth of flooding, as estimated by simulations based on the development status of sewerage facilities as of March 2025.
- This Hazard Map was created based on the maximum expected, rainfall (130 mm per hour), an amount of heavy rainfall that is thought to occur roughly once every 1,000 years.
- This diagram does not take into account river flooding, tsunamis, storm surges, or clogged drains. Therefore, actual flooding conditions may differ from those shown in this diagram.
- The colored areas are considered to be areas with a relatively high risk of flooding. Even areas without color may be flooded, so please take precautions early and act safely during heavy rain.



Contact information:  
Waterworks Planning Division, Fukuyama City Waterworks and Sewerage Bureau Engineering Department  
TEL:084-928-1090

### Facilities in Fukuyama City used by people with special needs

Information on facilities for people with special needs is listed on the city website and updated regularly.



### Emergency evacuation shelters in Fukuyama City

#### List of emergency evacuation shelters

- \* Not all emergency evacuation shelters will be opened at the same time. For evacuation, check the information issued by the City.
- \* In case of emergency, evacuate to a nearby safe place regardless of the emergency evacuation shelters designated by the City.

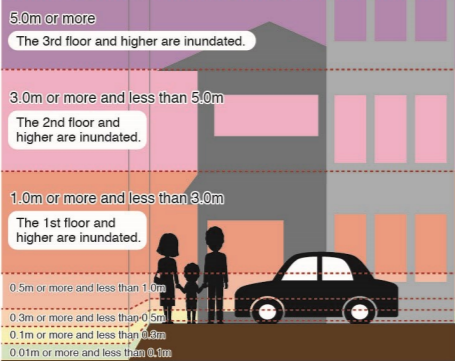
(April 2025)

No.	Facility name	Type of disaster	
		Landslide	Flood
1	Kawaguchi-Higashi Koryukan (Community Hall)	○	—
2	Kawaguchi-Higashi Elementary School	○	③
3	Hikari Elementary School	○	③
4	Kawaguchi Koryukan (Community Hall)	○	—
5	Kawaguchi Elementary School	○	③
6	Akebono Koryukan (Community Hall)	○	—
7	Akebono Elementary School	○	③
8	Tajime Koryukan (Community Hall)	○	—
9	Fukuyama City Gymnasium (F-Pico Arena Fukuyama)	○	②
10	Tajime Elementary School	○	③
11	Shingai Elementary School	○	③
12	Shingai Koryukan (Community Hall)	○	—
13	Seishi Junior High School	○	③
14	Fukuyama Techno Industrial Park Area	○	○
15	Minoshima Koryukan (Community Hall)	○	—
16	Minoshima Elementary School	○	—
17	Minomi Koryukan (Community Hall)	○	—
18	Suijo Sports Center	○	—
19	Minomi Elementary School	—	○
20	Fukuyama Transporting Co., Ltd., Fukuyama Port Distribution Center	○	○
21	Minoshima Prefectural Fukuyama Commercial High School	—	○
22	Mukaigaoka Junior High School	○	○
23	Kanbara Logistics Fukuyama Distribution Center	②	②
24	Takashima Elementary School	○	○
25	Tajiritakashima Koryukan (Community Hall)	○	○
26	Kumano Koryukan (Community Hall)	○	○
27	Kumano Elementary School	○	○

◆Type of disaster  
○: Can be used / ②: 2nd floor and higher floors can be used  
③: 3rd floor and higher floors can be used / -: Cannot be used

### Legend of flood-prone areas

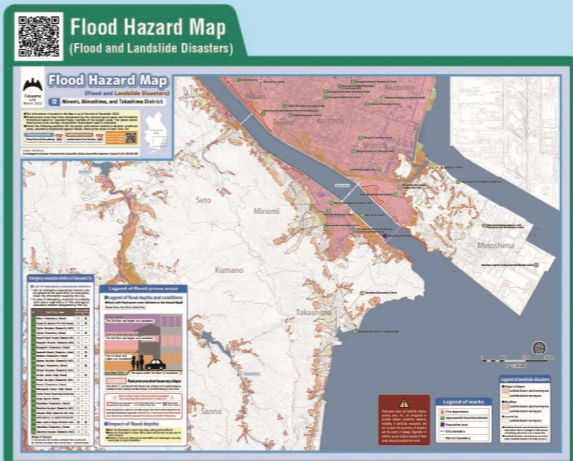
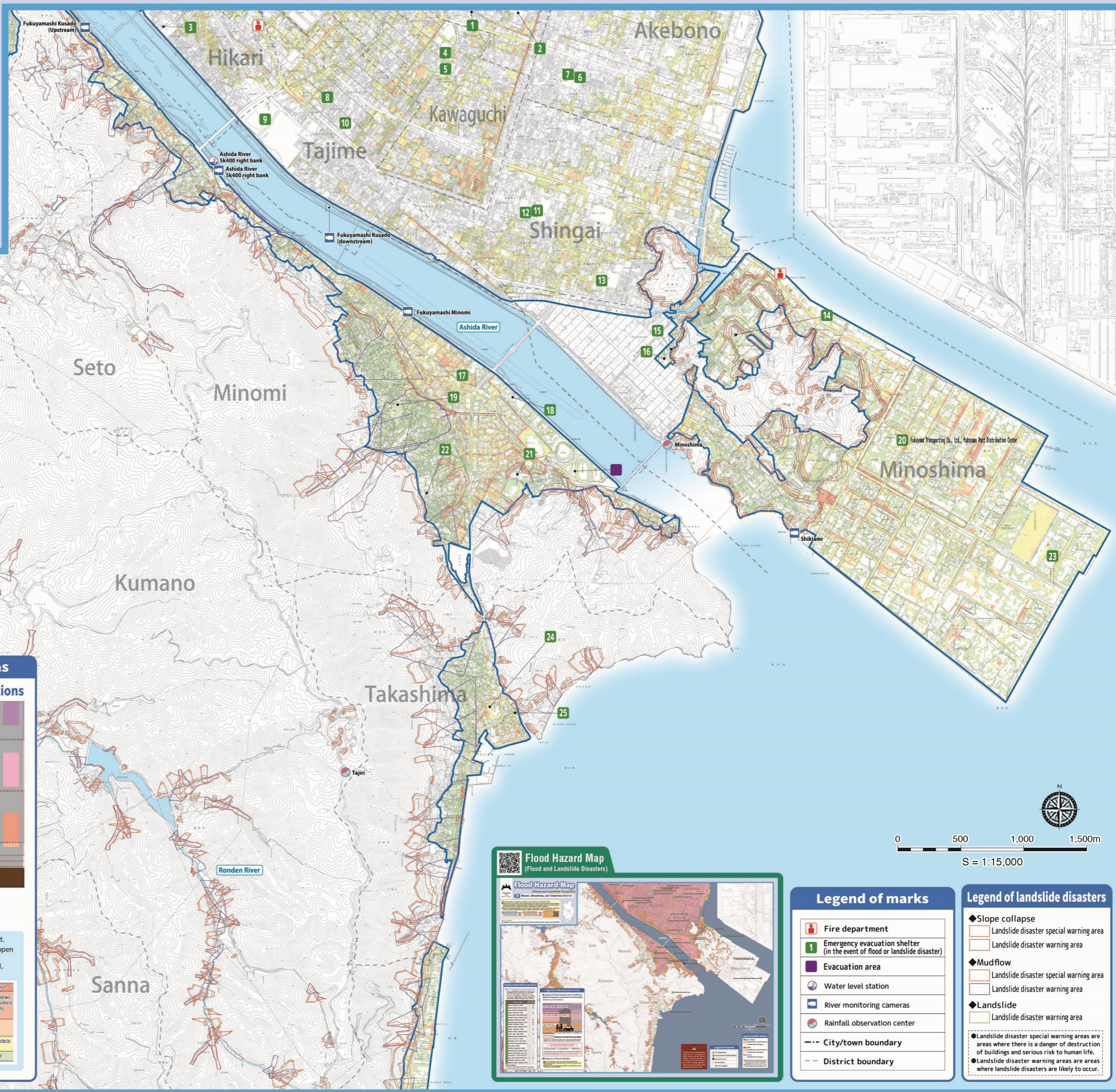
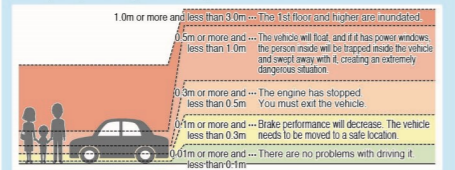
#### Legend of flood depths and conditions



Within the sewerage plan area

#### Impact of flood depths

- When the flood depth is about 0.5m, walking will be difficult.
- When the flood depth is about 0.3m, doors will be hard to open due to water pressure.
- Vehicles, if their air intake ports and mufflers are submerged, may stop moving due to engine breakdown.



### Legend of marks

	Fire department
	Emergency evacuation shelter (in the event of flood or landslide disaster)
	Evacuation area
	Water level station
	River monitoring cameras
	Rainfall observation center
	City/town boundary
	District boundary

### Legend of landslide disasters

- ◆Slope collapse
  - Landslide disaster special warning area
  - Landslide disaster warning area
- ◆Mudflow
  - Landslide disaster special warning area
  - Landslide disaster warning area
- ◆Landslide
  - Landslide disaster special warning areas are areas where there is a danger of destruction of buildings and serious risk to human life.
  - Landslide disaster warning areas are areas where landslides are likely to occur.