

Inland Water Hazard Map

(Within the sewerage plan area)

13 Tsuneishi, Chitose, Notohara, and Tomo District

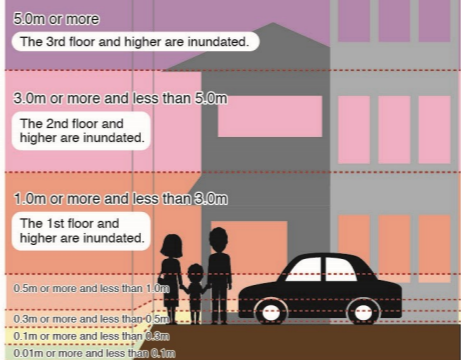
- This figure shows the anticipated extent and depth of flooding, as estimated by simulations based on the development status of sewerage facilities as of March 2025.
- This Hazard Map was created based on the maximum expected, rainfall (130 mm per hour), an amount of heavy rainfall that is thought to occur roughly once every 1,000 years.
- This diagram does not take into account river flooding, tsunamis, storm surges, or clogged drains. Therefore, actual flooding conditions may differ from those shown in this diagram.
- The colored areas are considered to be areas with a relatively high risk of flooding. Even areas without color may be flooded, so please take precautions early and act safely during heavy rain.

Contact information:
Waterworks Planning Division, Fukuyama City Waterworks
and Sewerage Bureau Engineering Department TEL:084-928-1090



Legend of flood-prone areas

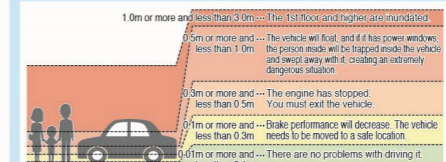
Legend of flood depths and conditions



Within the sewerage plan area

Impact of flood depths

- When the flood depth is about 0.5m, walking will be difficult.
- When the flood depth is about 0.3m, doors will be hard to open due to water pressure.
- Vehicles, if their air intake ports and mufflers are submerged, may stop moving due to engine breakdown.



Emergency evacuation shelters in Fukuyama City

List of emergency evacuation shelters

* Not all emergency evacuation shelters will be opened at the same time. For evacuation, check the information issued by the City.
* In case of emergency, evacuate to a nearby safe place regardless of the emergency evacuation shelters designated by the City. (April 2020)

No.	Facility name	Type of disaster	
		Landslide	Landslide
1	Kumano Koryukan (Community Hall)	○	○
2	Kumano Elementary School	○	○
3	Shisei Junior High School	○	○
4	Hiroshima Prefectural Numakuma Special needs School	○	○
5	Fujie Elementary School	○	○
6	Shimoyokadani Shukaijo (Assembly Hall)	○	○
7	Tsuneishi Holdings Shinanani Village Center House	-	○
8	Shinkani Kaikan (Sanna Koryukan (Community Hall))	○	○
9	Fujie Koryukan (Community Hall)	-	○
10	Sanna Elementary School	○	○
11	Numakuma Sports Center	○	-
12	Sugano Shukaijo (Assembly Hall)	-	○
13	Numakuma Gymnasium	○	-
14	Hayashizaki Shukaijo (Assembly Hall)	○	-
15	Tomonoura Gakuen (former Tomo Junior High School)	-	○
16	Tsuneishi Koryukan (Community Hall)	-	○
17	Hamagami Shukaijo (Assembly Hall)	○	-
18	Numakuma Shimin Koryu Center (Civic Center)	○	○
19	Chitose Koryukan (Community Hall)	○	-
20	Numakuma Sunpal	○	-
21	Nakagami Shukaijo (Assembly Hall)	○	○
22	Soei Gakuen (Inki (second term) (former Chitose Junior High School)	②	②
23	Nishigumi Shukaijo (Assembly Hall)	○	○
24	Tomo Koryukan (Community Hall) Tomo Community Center	-	○
25	Tsuneishi Tomoi Gakuen (former Tsuneishi Elementary School)	○	○
26	Tomonoura Gakuen (former Tomo Elementary School)	-	○
27	Tomo Koryukan (Community Hall)	○	○
28	Sakura Shukaijo (Assembly Hall)	-	○
29	Co., Ltd, Amochinni Head Office & Factory	○	○
30	Notohara Koryukan (Community Hall)	○	○
31	Notohara former School Facilities (former Notohara Elementary School)	○	○
32	Terayama Shukaijo (Assembly Hall)	○	○
33	Kamaya Shukaijo (Assembly Hall)	○	○
34	Uchimi Old School Facilities (former Uchimi Junior High School)	○	○

Type of disaster
○: Can be used / ②: 2nd floor and higher floors can be used / -: Cannot be used

Facilities in Fukuyama City used by people with special needs

Information on facilities for people with special needs is listed on the city website and updated regularly.

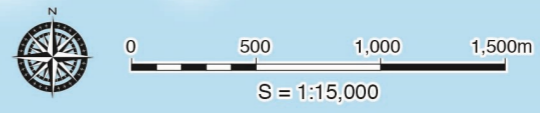
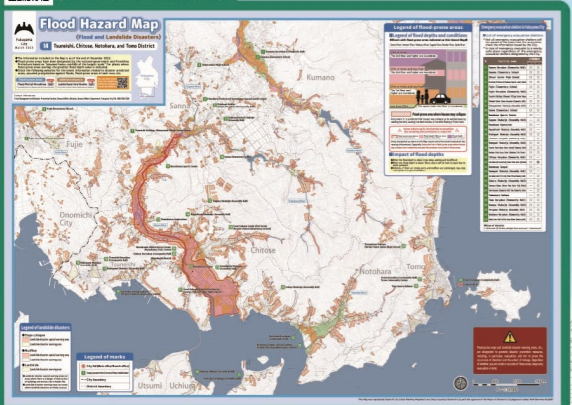


Legend of landslide disasters

- Slope collapse
 - Landslide disaster special warning area
 - Landslide disaster warning area
 - Mudflow
 - Landslide disaster special warning area
 - Landslide disaster warning area
 - Landslide
 - Landslide disaster warning area
- Landslide disaster special warning areas are areas where there is a danger of destruction of buildings and serious risk to human life.
● Landslide disaster warning areas are areas where landslides are likely to occur.



Flood Hazard Map



Legend of marks

- City Hall (Main office/Branch office)
- Emergency evacuation shelter (in the event of flood or landslide disaster)
- Water level station
- River monitoring cameras
- Rainfall observation center
- City/town boundary
- District boundary