

Inland Water Hazard Map

(Within the sewerage plan area)

10 Minami, Asahi, Teshiro, Kawaguchi-Higashi, Kawaguchi, Tajime, Akebono, Shingai, Nagahama, Asahigaoka, Otsuno, and Nonohama District

- This figure shows the anticipated extent and depth of flooding, as estimated by simulations based on the development status of sewerage facilities as of March 2025.
- This Hazard Map was created based on the maximum expected, rainfall (130 mm per hour), an amount of heavy rainfall that is thought to occur roughly once every 1,000 years.
- This diagram does not take into account river flooding, tsunamis, storm surges, or clogged drains. Therefore, actual flooding conditions may differ from those shown in this diagram.
- The colored areas are considered to be areas with a relatively high risk of flooding. Even areas without color may be flooded, so please take precautions early and act safely during

Contact information:
Waterworks Planning Division, Fukuyama City Waterworks and Sewerage Bureau Engineering Department
TEL:084-928-1090



Legend of flood-prone areas

Legend of flood depths and conditions

5.0m or more
The 3rd floor and higher are inundated.

3.0m or more and less than 5.0m
The 2nd floor and higher are inundated.

1.0m or more and less than 3.0m
The 1st floor and higher are inundated.

0.5m or more and less than 1.0m
The 1st floor and higher are inundated.

0.3m or more and less than 0.5m
The 1st floor and higher are inundated.

0.1m or more and less than 0.3m
The 1st floor and higher are inundated.

0.01m or more and less than 0.1m
The 1st floor and higher are inundated.

Impact of flood depths

- When the flood depth is about 0.5m, walking will be difficult.
- When the flood depth is about 0.3m, doors will be hard to open due to water pressure.
- Vehicles, if their air intake ports and mufflers are submerged, may stop moving due to engine breakdown.

1.0m or more and less than 3.0m: The 1st floor and higher are inundated.

0.5m or more and less than 1.0m: The vehicle will float, and if it has power windows, less than 1.0m, the person inside will be trapped inside the vehicle and swept away with it, creating an extremely dangerous situation.

0.3m or more and less than 0.5m: The engine has stopped, less than 0.5m, you must exit the vehicle.

0.1m or more and less than 0.3m: Brake performance will decrease. The vehicle needs to be moved to a safe location.

0.01m or more and less than 0.1m: There are no problems with driving it.

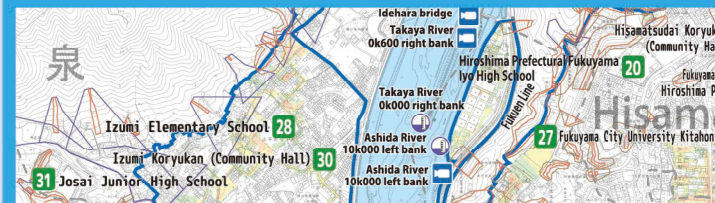
Legend of landslide disasters

- Slope collapse
 - Landslide disaster special warning area
 - Landslide disaster warning area
- Mudflow
 - Landslide disaster special warning area
 - Landslide disaster warning area

● Landslide disaster special warning areas are areas where there is a danger of destruction of buildings and serious risk to human life.
● Landslide disaster warning areas are areas where landslide disasters are likely to occur.

Legend of marks

- City Hall(Main office/Branch office)
- Police station
- Fire department
- Emergency evacuation shelter (in the event of flood or landslide)
- Evacuation area
- Underpass
- Water level station
- River monitoring cameras
- Rainfall observation center
- City boundary
- District boundary

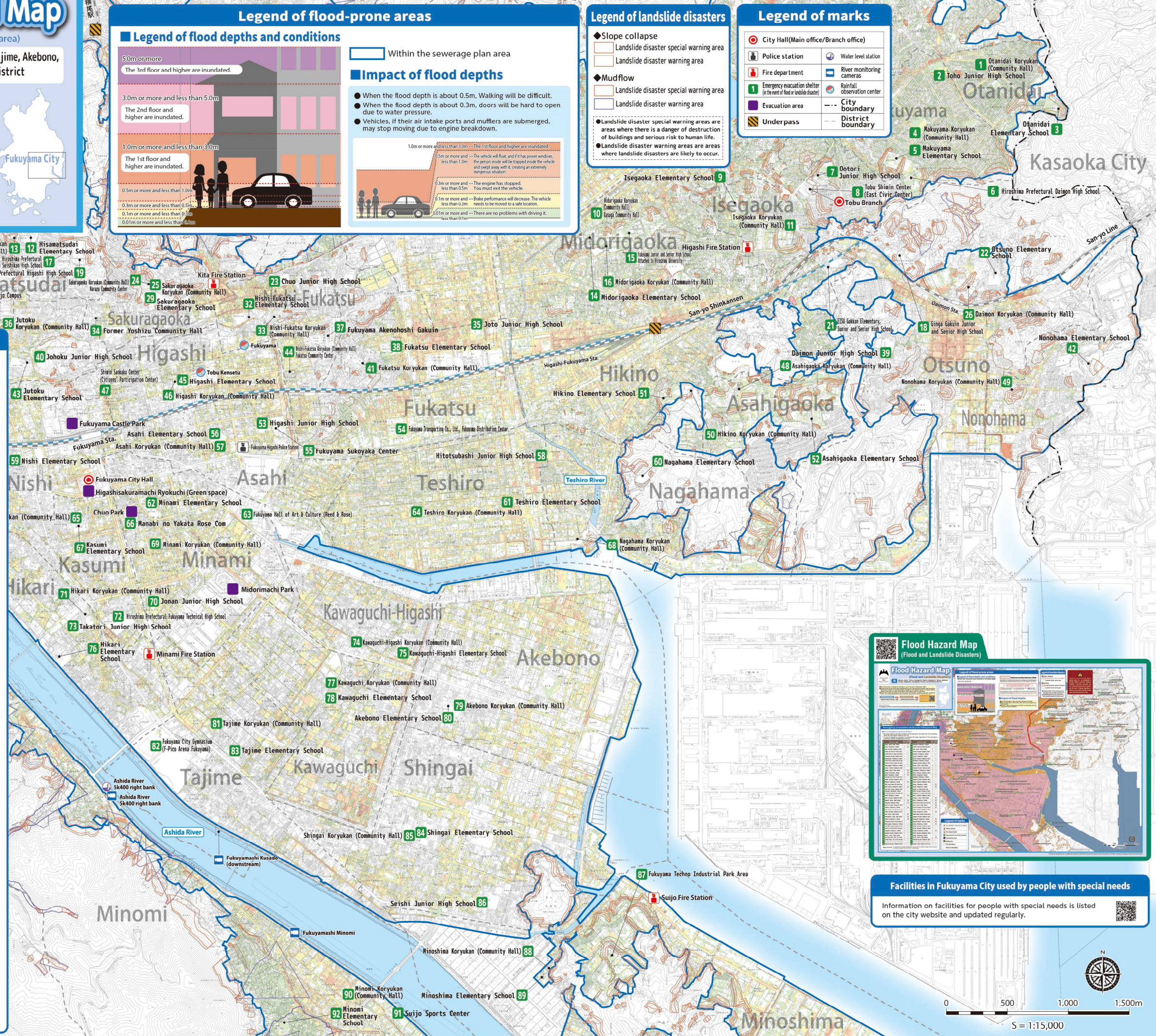


Emergency evacuation shelters in Fukuyama City

List of emergency evacuation shelters
 ● Not all emergency evacuation shelters will be opened at the same time. For evacuation, check the information issued by the City.
 * In case of emergency, evacuate to a nearby safe place regardless of the emergency evacuation shelters designated by the City.

No.	Facility name	Type of disaster		No.	Facility name	Type of disaster	
		Landslide	Flood			Landslide	Flood
1	Otanidai Koryukan (Community Hall)	○	○	47	Shinri Sanjaku Center (Citizens' Participation Center)	○	○
2	Toho Junior High School	○	○	48	Asahigaoka Koryukan (Community Hall)	○	○
3	Otanidai Elementary School	○	○	49	Nonohama Koryukan (Community Hall)	○	○
4	Makuyama Koryukan (Community Hall)	○	○	50	Hikino Koryukan (Community Hall)	○	○
5	Makuyama Elementary School	○	○	51	Hikino Elementary School	○	○
6	Hiroshima Prefectural Daimon High School	○	○	52	Asahigaoka Elementary School	○	○
7	Ootori Junior High School	○	○	53	Higashi Junior High School	○	③
8	Toho Shinin Center (East Civic Center)	○	○	54	Fukuyama Transporting Co., Ltd., Fukuyama Distribution Center	○	○
9	Isegaoka Elementary School	○	○	55	Fukuyama Sukoyaka Center	○	②
10	Midorigaoka Koryukan (Community Hall)	○	○	56	Asahi Elementary School	○	○
11	Isegaoka Koryukan (Community Hall)	○	○	57	Asahi Koryukan (Community Hall)	○	○
12	Hisamatsudai Elementary School	○	○	58	Hitotsubashi Junior High School	○	③
13	Hisamatsudai Koryukan (Community Hall)	○	○	59	Nishi Elementary School	○	③
14	Midorigaoka Elementary School	○	○	60	Nagahama Elementary School	○	○
15	Fukuyama Junior and Senior High School Attached to Hiroshima University	○	○	61	Teshiro Elementary School	○	③
16	Midorigaoka Koryukan (Community Hall)	○	○	62	Minami Elementary School	○	③
17	Hiroshima Prefectural Fukuyama Seishikan High School	○	○	63	Fukuyama Hall of Art & Culture (Reed & Rose)	○	○
18	Ginga Gakuin Junior and Senior High School	○	○	64	Teshiro Koryukan (Community Hall)	○	○
19	Hiroshima Prefectural Higashi High School	○	○	65	Kasumi Koryukan (Community Hall)	○	○
20	Hiroshima Prefectural Fukuyama Iyo High School	○	○	66	Manabi no Yakata Rose Com	○	○
21	EISU Gakkan Elementary, Junior and Senior High School	○	○	67	Kasumi Elementary School	○	③
22	Otsuno Elementary School	○	○	68	Nagahama Koryukan (Community Hall)	○	○
23	Chuo Junior High School	○	②	69	Minami Koryukan (Community Hall)	○	○
24	Sakuragaoka Koryukan (Community Hall)	○	○	70	Jonan Junior High School	○	③
25	Sakuragaoka Koryukan (Community Hall)	○	○	71	Hikari Koryukan (Community Hall)	○	○
26	Daimon Koryukan (Community Hall)	○	○	72	Hiroshima Prefectural Fukuyama Technical High School	○	③
27	Fukuyama City University Kitahonjo Campus	○	○	73	Takatori Junior High School	○	③
28	Izumi Elementary School	○	④	74	Kawaguchi-Higashi Koryukan (Community Hall)	○	○
29	Sakuragaoka Elementary School	○	○	75	Kawaguchi-Higashi Elementary School	○	③
30	Izumi Koryukan (Community Hall)	○	○	76	Hikari Elementary School	○	③
31	Josai Junior High School	○	○	77	Kawaguchi Koryukan (Community Hall)	○	○
32	Nishi-Fukatsu Elementary School	○	②	78	Kawaguchi Elementary School	○	③
33	Nishi-Fukatsu Koryukan (Community Hall)	○	○	79	Akebono Koryukan (Community Hall)	○	○
34	Former Yoshizu Community Hall	○	○	80	Akebono Elementary School	○	③
35	Joto Junior High School	○	③	81	Tajime Koryukan (Community Hall)	○	○
36	Jutoku Koryukan (Community Hall)	○	○	82	Fukuyama City Gymnasium (F-Pico Arena Fukuyama)	○	②
37	Fukuyama Akenohoshi Gakuin	○	○	83	Tajime Elementary School	○	③
38	Fukatsu Elementary School	○	②	84	Shingai Elementary School	○	③
39	Daimon Junior High School	○	○	85	Shingai Koryukan (Community Hall)	○	○
40	Johoku Junior High School	○	④	86	Seishi Junior High School	○	○
41	Fukatsu Koryukan (Community Hall)	○	○	87	Fukuyama Techno Industrial Park Area	○	○
42	Nonohama Elementary School	○	○	88	Minoshima Koryukan (Community Hall)	○	○
43	Jutoku Elementary School	○	○	89	Minoshima Elementary School	○	○
44	Nishi-Fukatsu Koryukan (Community Hall)	○	○	90	Minomi Koryukan (Community Hall)	○	○
45	Higashi Elementary School	○	②	91	Suijo Sports Center	○	○
46	Higashi Koryukan (Community Hall)	○	○	92	Minomi Elementary School	○	○

○: Can be used / ②: 2nd floor and higher floors can be used / ③: 3rd floor and higher floors can be used / ④: 4th floor and higher floors can be used / -: Cannot be used



Flood Hazard Map (Flood and Landslide Disasters)

Information on facilities for people with special needs is listed on the city website and updated regularly.

Facilities in Fukuyama City used by people with special needs
 Information on facilities for people with special needs is listed on the city website and updated regularly.

